

# MONARFLOOR® TRANQUILITY®: INSTALLATION INSTRUCTIONS

## Before You Start

Prior to the installation of Monarfloor® Tranquility, the product should be at room temperature to ensure that the self-adhesive backing will gain maximum bond strength. If Tranquility has been stored in cold conditions it must be left overnight within a warm environment prior to commencing installation. Optimum room temperature should be above 10°C.

### Tools & equipment required

Sharp knife and straight edge.

### Check sub-floor is suitably prepared

Ensure the floor surface is structurally sound, clean, dry and has no gaps where slabs are joined. Level as necessary prior to laying Tranquility, allow for thresholds at main entrances.

### Care of materials

Materials must be kept in a dry storage area at all times.

### Working safely

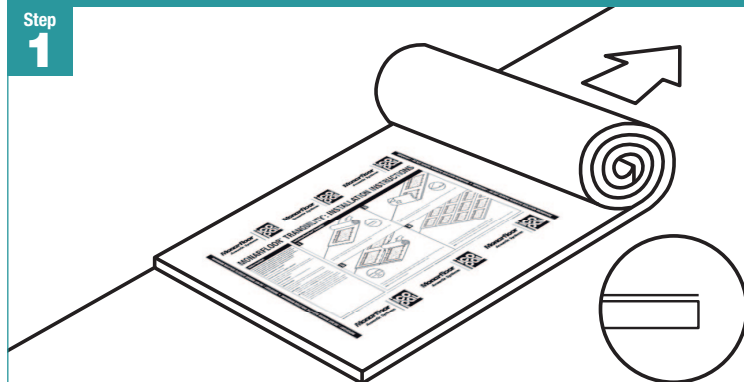
Good and safe working practices should be followed at all times, details and guidelines for which can be obtained from the Health & Safety Executive.

■ **Handling** – care should be taken at all times when handling Tranquility and, as it is manufactured using polyurethane and polyether polymers, a **no smoking** policy should be enforced.

■ **Cutting** – always cut Tranquility using a suitable straight edge and utility knife with hooked/trimming blade. It is recommended that appropriate PPE be worn. Appropriate ventilation or extraction should be provided in the room where work is being carried out at all times.

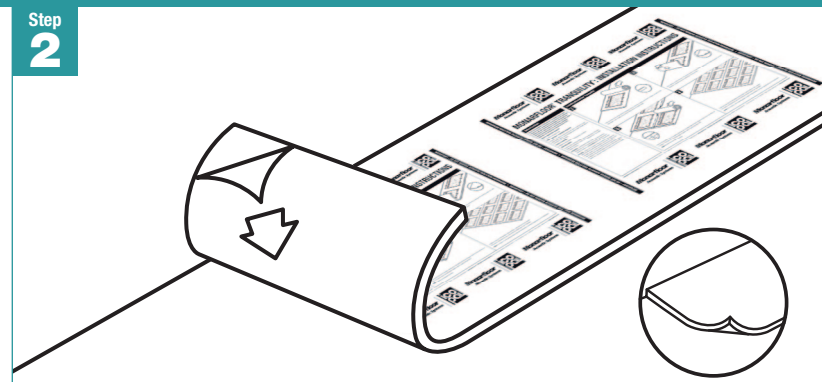
## Installing Monarfloor® Tranquility®

Step 1



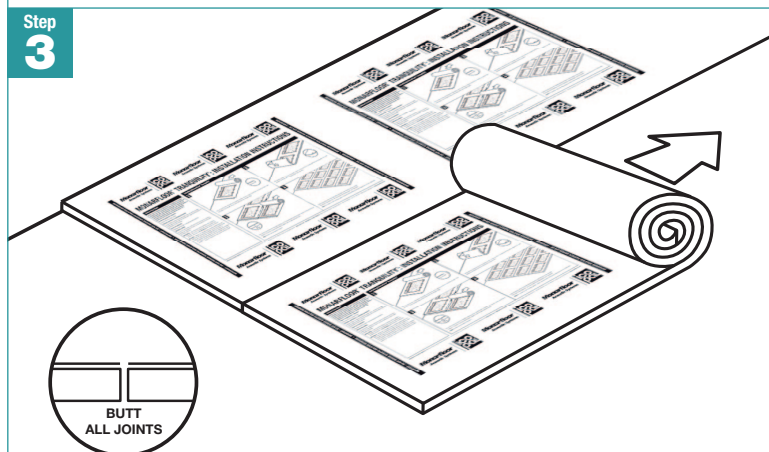
Roll out the first strip of Monarfloor Tranquility over the sub-floor making sure that it is butted up tight to the wall edges. Cut to length using a sharp utility knife and straight edge.

Step 2



After setting out the first strip of Tranquility, bond it to the sub-floor by peeling off the backing paper to its self-adhesive underside and then adhering it to the sub-floor.

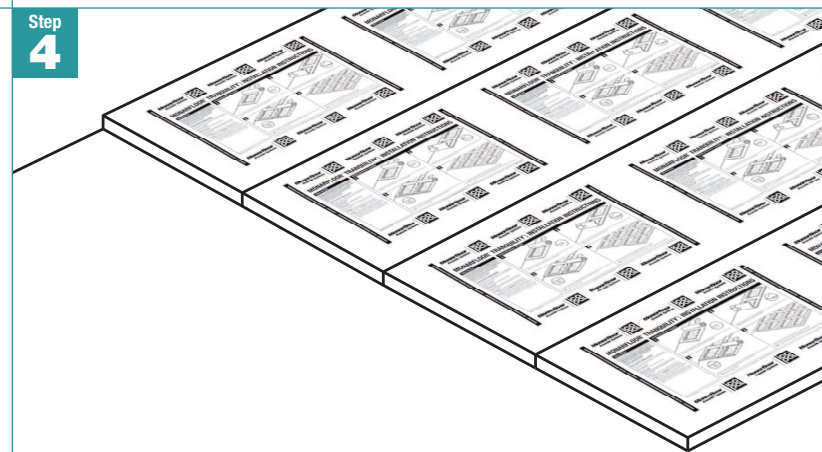
Step 3



Roll out the second strip of Tranquility, making sure it is butted tight to the first layer. Bond it to the sub-floor as in Step 2. The joints can be taped if required.

**Note:** All joints must be butted tightly together with no gaps between them.

Step 4



Continue laying out the Tranquility following Step 3 until the floor is fully covered. The wood or laminate floor can now be laid as a floating layer over Tranquility.

**Note:** For carpet or soft coverings please contact the Monarfloor Technical Department on 0161 866 6540.