

CI/SFB	July 2017
Uniclass	
Issue 01	

# Monarfloor Wall Cap – Lamatherm Timber System

## Sound Protection

### Monarfloor Wall Cap – Lamatherm Timber System

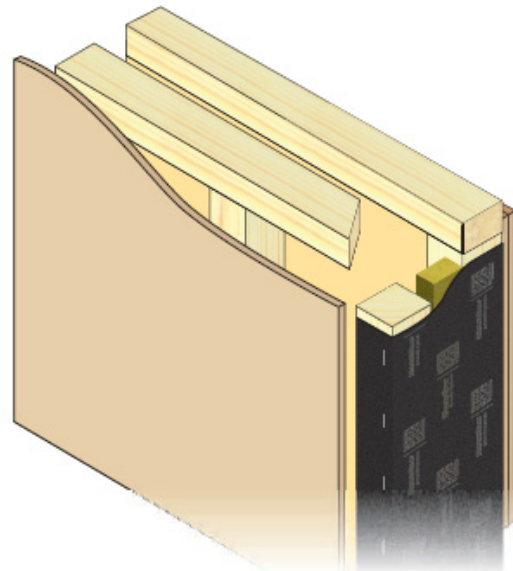
Acoustic isolation and energy insulating system for timber separating party cavity walls within multi-rise and attached developments.

Monarfloor Wall Cap – Lamatherm Timber isolates both timber leaves of the party wall from the flanking wall, reducing the acoustic flanking sound transmission within the structure.

Monarfloor Wall Cap – Lamatherm Timber also provides effective edge sealing at the party wall flanking wall junction to reduce the thermal convection. The system also acts as the fire barrier for the party wall at this junction.

### Features and Benefits

- Isolates the timber separating party cavity wall from the flanking wall.
- Reduces the flanking sound transmission energy within the structure.
- Superior acoustic isolation performance.
- Can be used as an isolator / innovative flanking detail with any timber separating party cavity wall.
- Easily installed within current standard wall constructions.
- Significantly improves the acoustic isolation of the building when used in conjunction with other Monarfloor acoustic systems for party walls and floors.
- When used with other Monarfloor® systems, provides 'effective edge sealing' reducing the heat loss within the cavity and thus meeting the changes to Approved Document L1A of the Building Regulations for England and Wales (October 2010).
- Ensures the robustness of other acoustic systems for party walls.
- Demonstrates a significant cost saving and flexibility in the design and build of the building.
- Surpasses performance requirements of Approved Document E of the Building Regulations.
- Can be used to improve the acoustic and thermal performance and gain 3-4 credits towards The Code for Sustainable Homes or Home Quality Mark HQM.
- One system to address acoustic, thermal and fire performance requirements for new-build dwellings.



### System Kit

Monarfloor Wall Cap – Lamatherm is available as a system kit comprising of 30 Wall Cap – Lamatherm Timber Bats. Kits are available in 3 sizes to suit cavities 50-100mm.

### Product Data

<b>Composition</b>	Wall Cap Lamatherm Bats – Bitumen composite membrane with acoustically rated fillers and fire rated mineral wool bat.
<b>Sizes</b>	Wall Cap Lamatherm Bats – 460mm long, 60mm, 85mm and 110mm widths to suit cavities 50-100mm.
<b>Kit Weight</b>	22kg (max)



EN 13707 15 0086-CPD-505779

Ref: ICO2150

CI/SFB	July 2017
Uniclass	
Issue 01	

# Monarfloor Wall Cap – Lamatherm Timber System

## Sound Protection

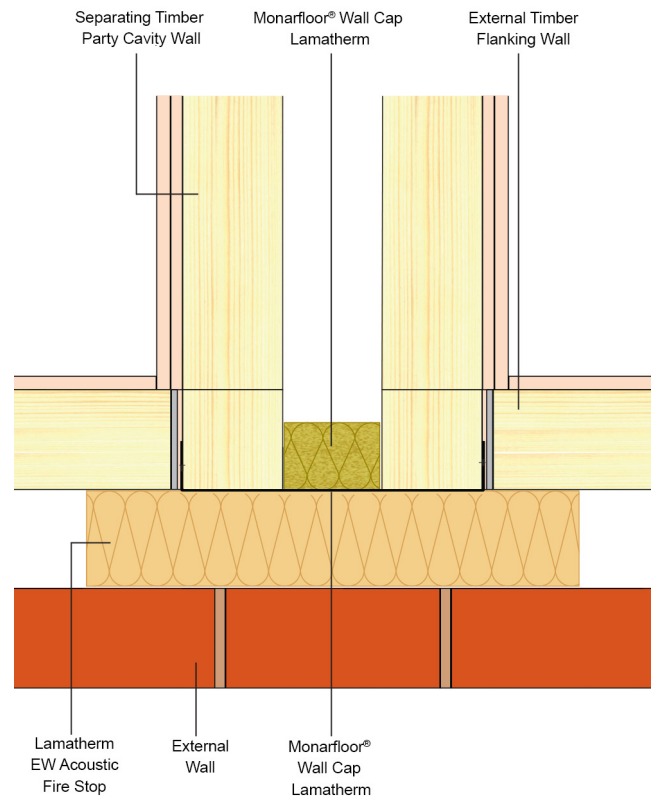
### Installation at a glance

- Insert the Wall Cap – Lamatherm, ensuring the mineral wool bat is tight within the cavity.
- Return the Wall Cap – Lamatherm membrane and staple the membrane to the timber frame with an industrial staple gun.
- Proceed with the next layer, ensuring the rebates within the mineral-wool are interlocked snugly.

### Related Products

- **Monarfloor® Wall Cap 250 Timber System** acoustic isolation system for separating timber frame twin stud party walls within multi-rise developments.
- **Monarfloor® Wall Cap 100 Timber System** acoustic isolation system for separating timber flanking walls within multi-rise developments.
- **Monarfloor® Flanking Band** – reduces impact vibration transmission via party and flanking walls and assists in reducing airborne sound paths.
- **Monarfloor® Acoustic Tri-Batten System** – reduces sound transmission through timber frame floors in a timber framed structure.
- **Monarfloor® Isolation Strip** – acoustic strip designed to reduce sound transmission through timber floors.

*For full details refer to individual Monarfloor® Product Data Sheets.*



**Monarfloor® Wall Cap – Lamatherm Timber System: Detail at Party Wall/Flanking Wall Junction (Plan View).**

### Technical Support

Monarfloor Acoustic Systems offers FREE technical advice and assistance on all aspects of acoustic systems.

We can also undertake site visits to provide contractors with advice and assistance at every stage of a project from concept to completion.



EN 13707 15 0086-CPD-505779