

CI/SfB	March 2017
Uniclass	
Issue 01	

Monarfloor Acoustic Cradle System

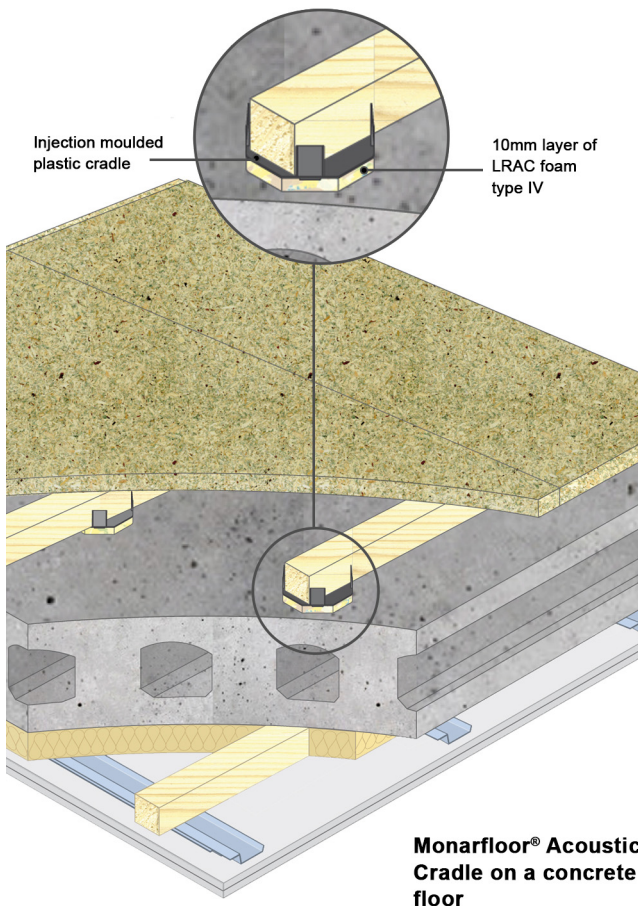
Sound Protection

FFT2 Resilient cradle and batten system.

The Monarfloor Acoustic Cradle System is designed to reduce sound transmission through concrete or timber floors in situations where the sub-floor is uneven, has a camber or a void is required for services etc.

The Monarfloor Acoustic Cradle System consists of two components, the Monarfloor Acoustic Cradle which reduces the sound transmission and holds the timber battens, and Monarfloor Acoustic Cradle Packers which are used to level the battens at each cradle.

When installed as part of a complete sound reduction system it enables a concrete or timber floor to meet the sound transmission regulations of Part E.



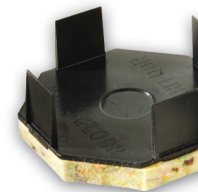
Construction

The Monarfloor Acoustic Cradle System has two components:

- **Monarfloor Acoustic Cradle** consists of a 10mm layer of LRAC foam type IV bonded to an injected moulded plastic cradle.
- **Monarfloor Acoustic Cradle Packers** - injected moulded plastic available in 2mm & 3mm
For full details refer to our Product Information and Safety Data Sheet.

Product Data Acoustic Cradle

Size	103mm x 103mm Octagonal
Height	60mm minimum (includes timber batten)
DnT,w + Ctr	Complies with Robust Detail Ref E-FS-1; E-FC-1 and E-FC-2 performance
L'nT,w	



Monarfloor®
Acoustic
Cradle

Product Data Acoustic Cradle Packers

Size	103mm x 103mm Octagonal
Height	2mm and 3mm available



Monarfloor®
Acoustic
Cradle Pads



EN 13707 15 0086-CPD-505779

Ref: ICO2039

CI/SB	March 2017
Uniclass	
Issue 01	

Monarfloor Acoustic Cradle System

Sound Protection

Installation

- Flank all perimeter with Monarfloor Flanking Band.
- Set out Monarfloor Acoustic Cradles at between 450mm to 600mm centres on the sub-floor (centres dependant on floor load and finished deck thickness).
- Fit 45 x 45mm softwood battens into the Acoustic Cradles (batten height can be increased from 45mm).
- Use Monarfloor Acoustic Cradle Packers to level the battens at each cradle.
- Overlay the battens with an 18mm or 22mm P5 (minimum) chipboard deck laid in a broken bond pattern with all joints supported and glued.
- Install skirting and trim off excess flanking band.

For full details refer to our *Monarfloor Acoustic Cradles System Installation Sheet* or visit our website: www.monarfloor.co.uk

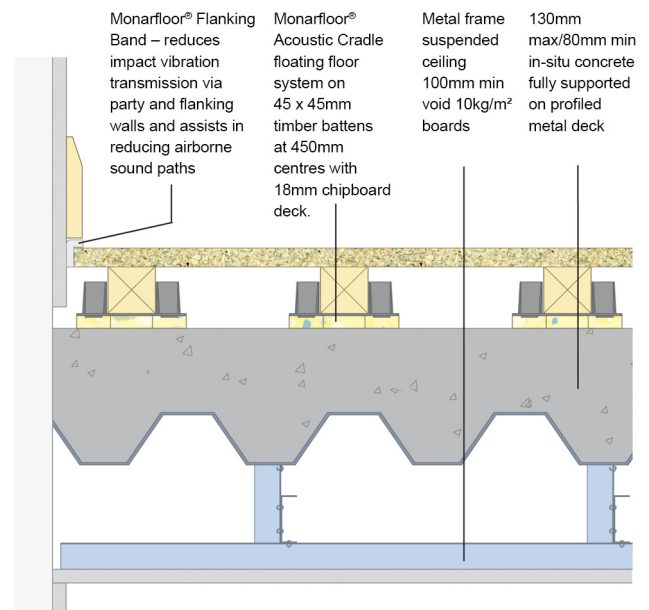
Related Products

- **Monarfloor Flanking Band** – reduces impact vibration transmission via party and flanking walls and assists in reducing airborne sound paths. *For full details refer to our Monarfloor Flanking Band Data Sheet.*
- **Monarfloor Adhesive** *For full details refer to our Monarfloor Adhesive Data Sheet.*

Technical Support

Monarfloor Acoustic Systems offers FREE technical advice and assistance on all aspects of acoustic systems.

We can also undertake site visits to provide contractors with advice and assistance at every stage of a project from concept to completion.



Monarfloor® Acoustic Cradle on a profiled metal deck/concrete floor with MF ceiling (Robust Details E-FS-1 with FFT2 Floating Floor).

Technical Support

Monarfloor Acoustic Systems offers FREE technical advice and assistance on all aspects of acoustic systems.

We can also undertake site

