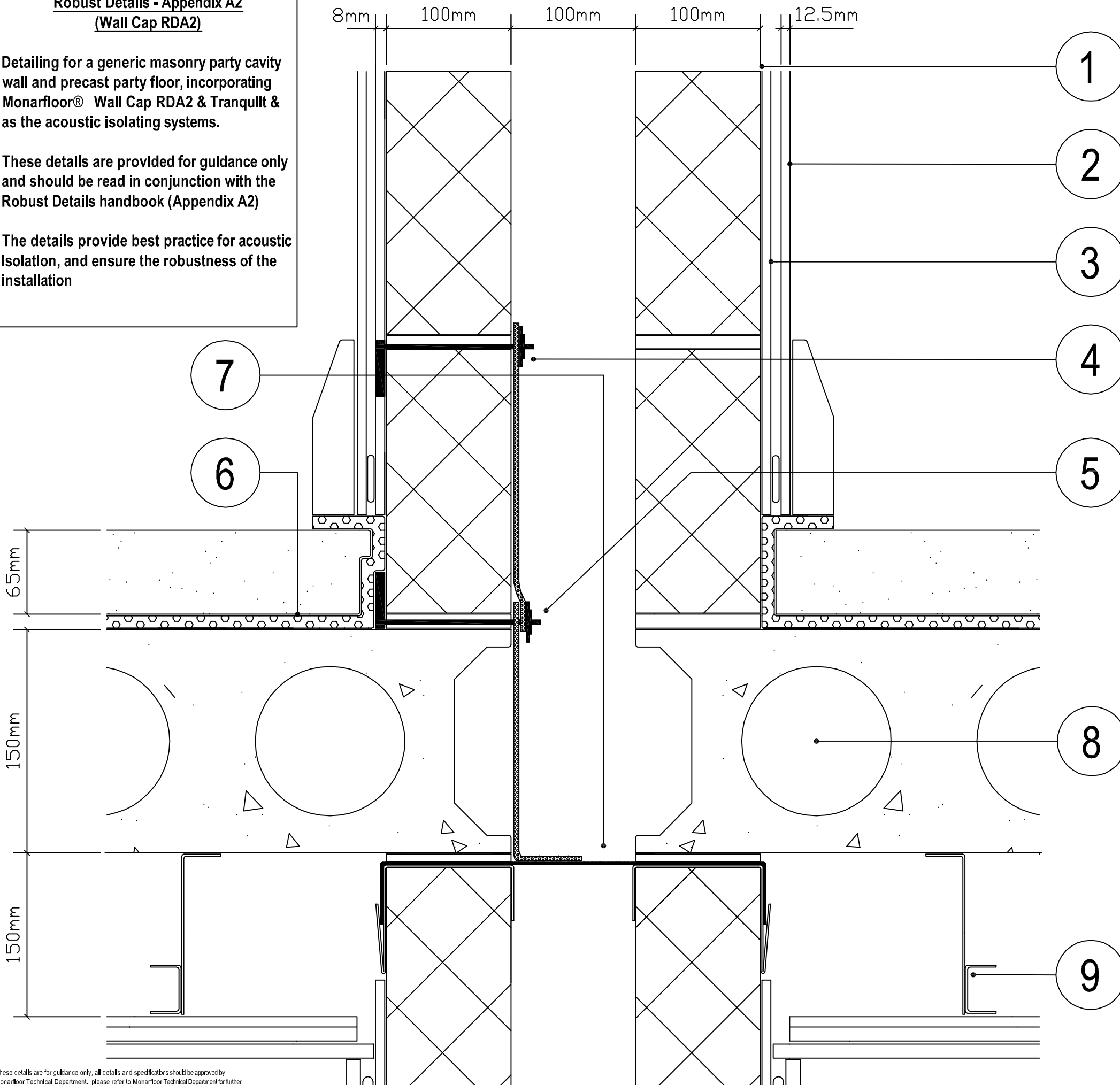


Robust Details - Appendix A2
(Wall Cap RDA2)

Detailing for a generic masonry party cavity wall and precast party floor, incorporating Monarfloor® Wall Cap RDA2 & Tranquilt & as the acoustic isolating systems.

These details are provided for guidance only and should be read in conjunction with the Robust Details handbook (Appendix A2)

The details provide best practice for acoustic isolation, and ensure the robustness of the installation



- ① AGGREGATE BLOCKS
(Acceptable for use within the system)
Dense Aggregate 1850 - 2300 kg/m³
Lightweight Aggregate 1350 - 1600 kg/m³
Aircrete 600 kg/m³
Besblock "Star Performer"
- ② Gypsum - based board (nominal 8kg/m²)
on dabs (or 13mm plaster)
- ③ Nominal 8mm render coat with gypsum -
based board (nominal 8 kg/m²) mounted on
dabs.
- ④ Monarfloor® Wall Cap RDA2 Quilt in two
lifts to prevent mortar droppings touching
both masonry skins.
- ⑤ Monarfloor® Wall Cap RDA2 Tie with render
depth marker, to penetrate at 450mm
centers (max). Ties are reversible.
- ⑥ Monarfloor® Tranquilt, with integrated
flanking / upstanding and jointing laid over
precast floor plank, with 65mm (min) Sand :
Cement, or 40mm (min) proprietary 'flow'
floating screed, nominal 80 kg/m² mass per
unit area.
- ⑦ 3.5mm Monarfloor® Wall Cap RDA2 laid as
a continual layer over the load bearing party
cavity wall and retained with Wall Cap Clips.
- ⑧ 150mm (min) precast concrete floor plank,
300 kg/m² (min) mass per unit area,
supported by the load bearing party cavity
walls and flanking walls, isolated with
Monarfloor® Wall Cap 200
- ⑨ Metal Ceiling System with 150mm ceiling
void and one layer of nominal 8 kg/m²
gypsum - based board.

Project: **Icopal / Napier Joint Development**

Title: **Generic party wall / party floor detail - Wall Cap RDA2**

Building Performance Centre  

Monarfloor® Acoustic Systems 

Drawn: **LN** Scale: **NTS**

Date: **December 2011**

ICO2386 - issue 1

These details are for guidance only. All details and specifications should be approved by Monarfloor Technical Department. Please refer to Monarfloor Technical Department for further assistance.