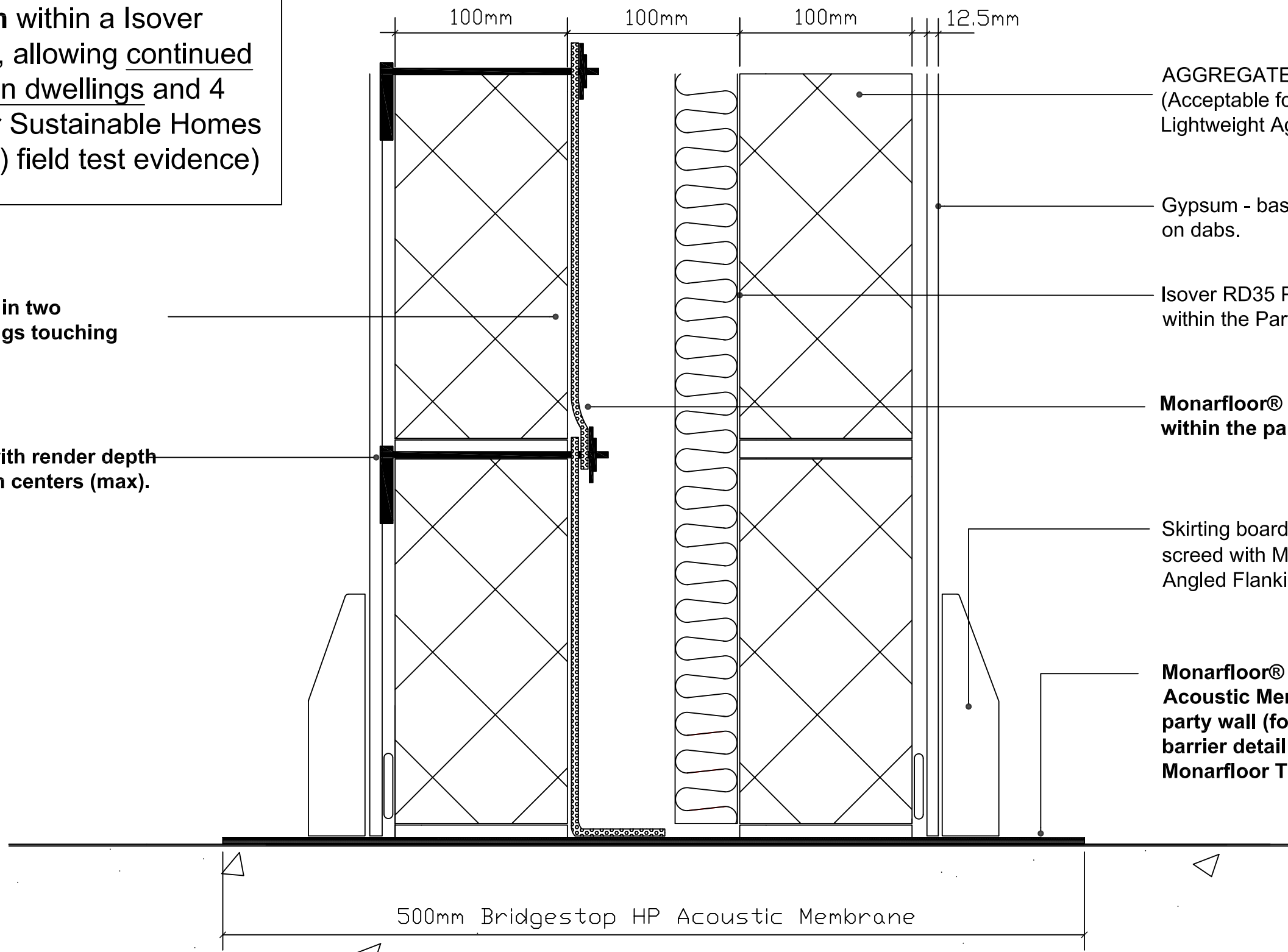


Bridgestop® System within a Isover RD35 party-wall detail, allowing continued raft foundation between dwellings and 4 credits within Code for Sustainable Homes (based on PCT (mean) field test evidence)

Monarfloor® Bridgestop Quilt in two lifts to prevent mortar droppings touching both masonry skins.

Monarfloor® Bridgestop Tie with render depth marker, to penetrate at 450mm centers (max). Ties are reversible.



AGGREGATE BLOCKS
(Acceptable for use within the system)
Lightweight Aggregate 1350 - 1600 kg/m³

Gypsum - based board (nominal 9.8kg/m²)
on dabs.

Isover RD35 Partial Cavity Fill System
within the Party Cavity Wall.

Monarfloor® Bridgestop System
within the party cavity-wall




Skirting board isolated from finish
screed with Monarfloor® Acoustic
Angled Flanking Band

**Monarfloor® Bridgestop 3mm HP
Acoustic Membrane** laid under the
party wall (for specific gas / radon
barrier detailing please refer to
Monarfloor Technical Department).

500mm Bridgestop HP Acoustic Membrane

Power floated Insulslab to Engineers approval. Refer to **Insulslab details**.

Construction Note - Staifix HRT4 wall ties, (TYPE A) should be used in conjunction with the Bridgestop System, and punctured through at 900mm centers

Project:		Icopal / Napier Joint Development	
Title:		Bridgestop System with Isover RD35 Party Wall over Insulslab Raft	
Building Performance Center			
		Monarfloor® Acoustic Systems 	
Drawn:	LN	Scale:	NTS
Date:	January 2010		Issue - 1