

MONARFLOOR BRIDGESTOP® SYSTEM INSTALLATION INSTRUCTIONS



Before You Start

Check contents of pack

- 2 x rolls of Bridgestop® Quilt
Size: 8m x 300mm x 10mm.
- 1 x roll of Bridgestop® Membrane
Size: 8m x 500mm x 3mm.
- 40 x Bridgestop® Ties.

Check deck is suitably prepared

Ensure the surface is structurally sound, clean and dry.

Tools

No special tools are required to install Bridgestop.

Working Safely

Working on any building site can be a hazardous activity. Only suitable persons having appropriate competence, training and physical fitness should be allowed onsite.

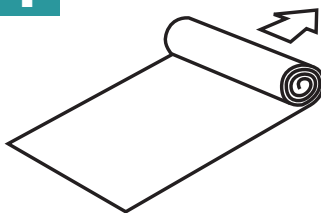
Personal Protective Equipment (PPE) must be worn at all times.

Developed in association with Building Performance Centre

Edinburgh Napier
UNIVERSITY

Installing Bridgestop®

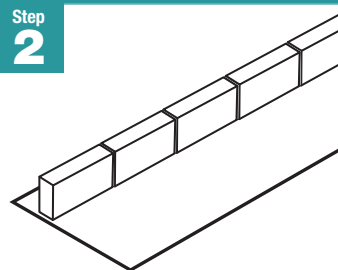
Step 1



Roll out a continuous layer of Bridgestop membrane over the suitably prepared deck, making sure membrane is centred within the walls area.

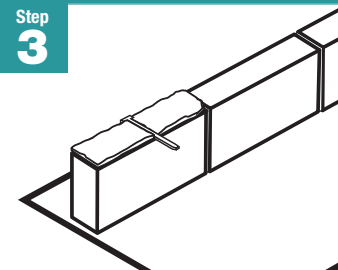
Note: If the membrane needs to be joined (over 8m in length), butt join and seal with waterproof tape.

Step 2



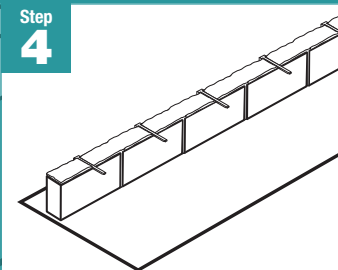
Build full length of first wall up to one block course high.

Step 3



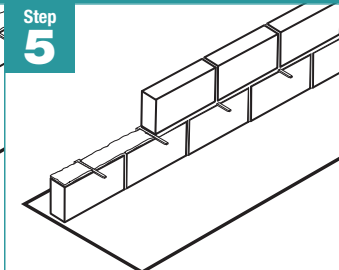
Bed first Bridgestop Tie in position on top of mortar close to start of wall.

Step 4



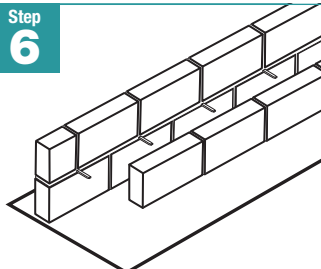
Continue bedding in ties every 450mm.

Step 5



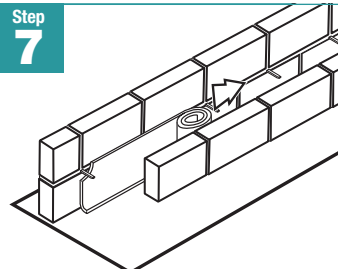
Build first wall up by a minimum of one more block course.

Step 6



Build full length of opposite wall up to one block course high.

Step 7

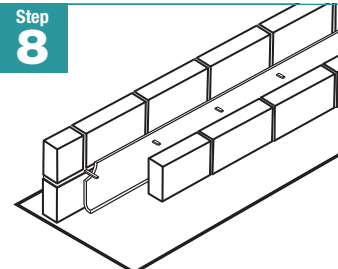


Roll out Bridgestop Quilt in the cavity between the two walls ensuring that the bottom edge of the quilt touches the deck and that the top edge of the quilt covers the first block joint.

Note: If the quilt needs to be joined (over 8m in length), butt join and seal with waterproof tape.

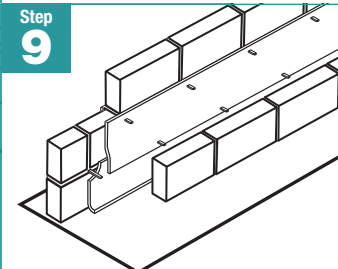


Step 8



Fix the quilt in position by pushing it onto the ties, ensuring the ties penetrate the quilt.

Step 9

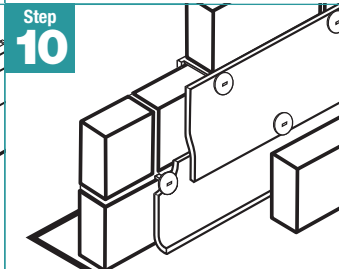


Install a second layer of Bridgestop Quilt by repeating previous steps 3 to 8.

Note: A second layer of quilt is required to ensure the system is robust.



Step 10



Lock the ties in position by pushing tie locking caps over the open ends.

The excess tie must be trimmed flush with the locking cap.

Once quilt is fully installed complete building work.

