

Monarfloor Tri-Deck on timber joists.

Features and Benefits

- **Supports floor loadings defined in BS: 6399-1: 1996**
- **Superior performance** – the recycled Low Resonance Acoustic Chip (LRAC) foam used has excellent impact improvement characteristics and superior stability within a single layer.
- **Flame retardant** – all LRAC foam used in Monarfloor® systems is flame retardant.
- **Quality assured** – Monarfloor® products meet all current standards.



Monarfloor® Tri-Deck System

Resilient overlay platform direct to joist floor system.

Monarfloor® Tri-Deck is designed to reduce sound transmission through timber floors where the existing timber floor will be removed but access to work on the ceiling below will be restricted.

When installed as part of a complete sound reduction system it enables a timber floor to meet the sound transmission regulations of Part E.

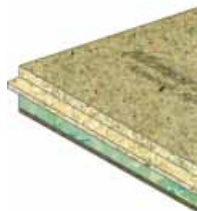
Construction

Monarfloor® Tri-Deck consists of a 5mm layer of foam rubber bonded to an 8mm layer of LRAC foam type I bonded which is then bonded to 22mm V313 P5 moisture resistant chipboard.

For full details refer to our Product Information and Safety Data Sheet.

Product Data

Board Size	2400mm x 600mm
Thickness	35mm
Board Weight	30.50kg
Weight/m²	21.18kg
DnT,w	55dB
DnT,w + Ctr	46dB
L'nT,w	56dB
Performance based on PCT test evidence	



Installation

See over for details.

Monarfloor® Tri-Deck System

Installation at a glance

- Flank all perimeter with Monarfloor® Flanking Band.
- Lay Monarfloor® Tri-Deck directly over the floor joists in a broken bond pattern with all joints supported and glued.
- Install skirting and trim off excess Flanking Band.

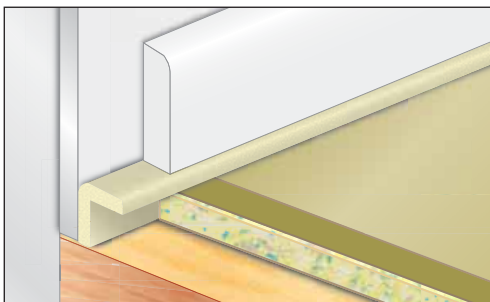
Note: Guidance should be sought if you are in any doubt as to the quality or density of the surrounding structural elements.

For full details including advice on services and penetrations refer to our Monarfloor® Tri-Deck System Installation Sheet or visit our website:

www.monarfloor.co.uk

Related Products

- **Monarfloor® Flanking Band** – reduces impact vibration transmission via party and flanking walls and assists in reducing airborne sound paths.



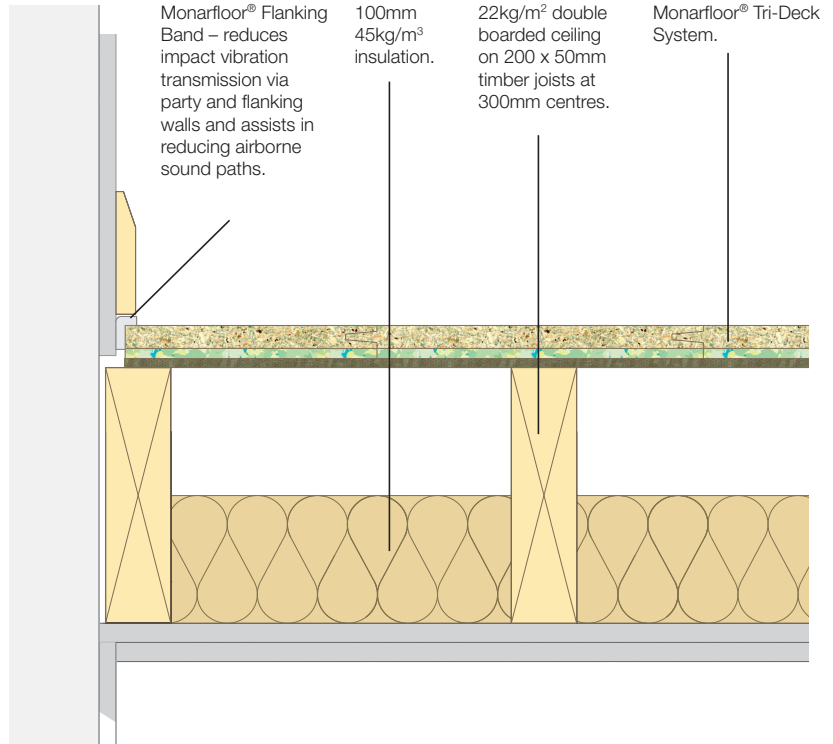
For full details refer to our Monarfloor® Flanking Band Data Sheet.

- **Monarfloor® Adhesive**

For full details refer to our Monarfloor® Adhesive Data Sheet.

Icopal Limited

Barton Dock Road, Stretford, Manchester M32 0YL
Telephone: 0161 866 6540
Fax: 0161 866 6527
Email: acoustics.uk@icopal.com



Monarfloor® Tri-Deck over timber joists.

Technical Support

Monarfloor® Acoustic Systems offers FREE technical advice and assistance on all aspects of acoustic systems.

We can also undertake site visits to provide contractors with advice and assistance at every stage of a project from concept to completion.

NOTE: This information is given in good faith being based on the latest knowledge known to Monarfloor® Acoustic Systems. Whilst every effort has been made to ensure the contents of the publication are current while going to press, customers are advised that products, techniques and Codes of Practice are under constant review and liable to change without notice. Up to date information is available from our Technical Services Department on request.

Responsibility cannot be accepted for the application of products, and no claims can be considered, where the manufacturer's instructions have not been followed. The user should not assume; based on information provided in this sheet, that the product is suitable for any abnormal use.

All products are sold subject to our standard terms and conditions of sale, a copy of which is available on request.