

Monarfloor® Tri-Batten on a timber sub-floor.

Features and Benefits

- **Supports floor loadings defined in BS: 6399-1: 1996**
- **Superior performance** – the recycled Low Resonance Acoustic Chip (LRAC) foam used has excellent impact improvement characteristics and superior stability within a single layer.
- **Flame retardant** – all LRAC foam used in Monarfloor® systems is flame retardant.
- **Quality assured** – Monarfloor® products meet all current standards.



Monarfloor® Acoustic Tri-Batten System

FFT1 Resilient composite deep batten system.

FFT3 Resilient composite standard batten system.

The Monarfloor® Acoustic Tri-Batten System is designed to reduce sound transmission through timber frame floors in a timber framed structure and can be overlaid directly with an 18mm or 22mm chipboard deck.

When installed as part of a complete sound reduction system it enables a timber floor to meet the sound transmission regulations of Part E.

Construction

Monarfloor® Tri-Batten System consists of a 15mm layer of LRAC foam type III bonded to a timber batten with a 3mm thick geotextile fibrous isolation mat that improves impact sound performance and enables easy and secure fixing to the sub-floor.

For full details refer to our Product Information and Safety Data Sheet.

Product Data

Batten Size	1800mm x 45mm
Thickness	53mm and 78mm available
DnT,w DnT,w + Ctr L'nT,w	Complies with Robust Detail Ref E-FC-1; E-FC-2; E-FS-1; E-FT-1 and E-FT-2
Performance based on PCT and Lab test evidence	



Installation

See over for details.

Monarfloor® Acoustic Tri-Batten System

Installation at a glance

- Flank all perimeter with Monarfloor® Flanking Band.
- Lay Monarfloor® Acoustic Tri-Battens foam side up on the timber sub-floor at 400mm (maximum) centres.
- Fix Monarfloor® Acoustic Tri-Battens in position by stapling to the sub-floor through the geotextile isolation mat.
- Apply adhesive to the top foam surface of the tri-batten.
- Overlay the battens with plasterboard plank and an 18mm or 22mm tongue and groove chipboard deck laid in a broken bond pattern with all joints supported and glued.
- Install skirting and trim off excess flanking band.

For full details refer to our Monarfloor® Acoustic Tri-Batten System Installation Sheet or visit our website:
www.monarfloor.co.uk

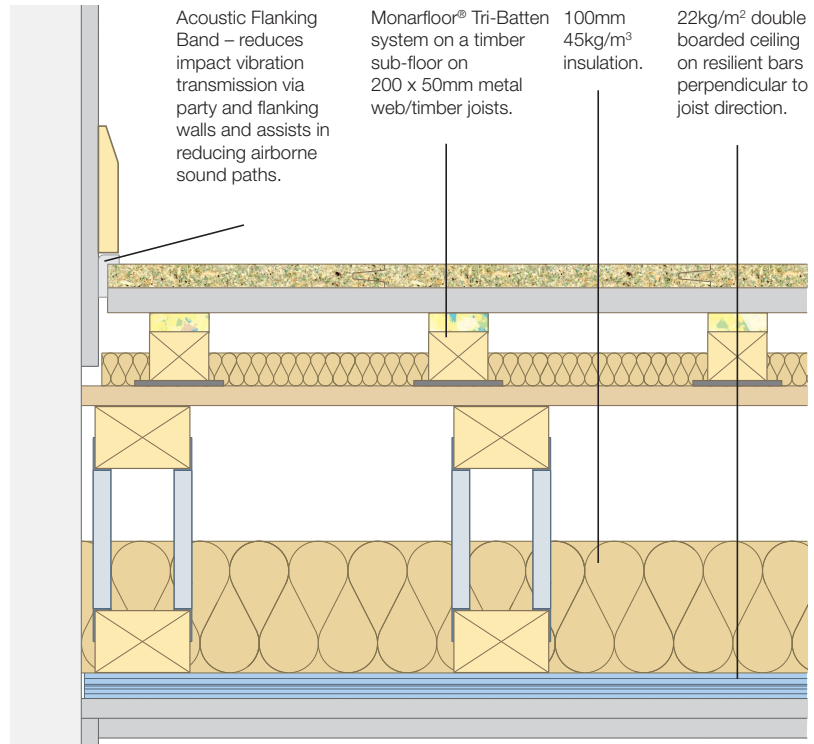
Related Products

- **Monarfloor® Flanking Band** – reduces impact vibration transmission via party and flanking walls and assists in reducing airborne sound paths.

For full details refer to our Monarfloor® Flanking Band Data Sheet.

- **Monarfloor® Adhesive**

For full details refer to our Monarfloor® Adhesive Data Sheet.



Monarfloor® Tri-Batten on timber joists with a resilient bar ceiling.

Technical Support

Monarfloor® Acoustic Systems offers FREE technical advice and assistance on all aspects of acoustic systems.

We can also undertake site visits to provide contractors with advice and assistance at every stage of a project from concept to completion.

NOTE: This information is given in good faith being based on the latest knowledge known to Monarfloor® Acoustic Systems. Whilst every effort has been made to ensure the contents of the publication are current while going to press, customers are advised that products, techniques and Codes of Practice are under constant review and liable to change without notice. Up to date information is available from our Technical Services Department on request.

Responsibility cannot be accepted for the application of products, and no claims can be considered, where the manufacturer's instructions have not been followed. The user should not assume; based on information provided in this sheet, that the product is suitable for any abnormal use.

All products are sold subject to our standard terms and conditions of sale, a copy of which is available on request.

Icopal Limited

Barton Dock Road, Stretford, Manchester M32 0YL
Telephone: 0161 866 6540
Fax: 0161 866 6527
Email: acoustics.uk@icopal.com



For further information call 0161 866 6540
or visit www.monarfloor.co.uk