

Monarfloor® Deck 22 on a timber sub-floor.

Monarfloor® Deck 22 System

Resilient overlay platform floor system.

Monarfloor® Deck 22 is an overlay system designed to reduce sound transmission through existing timber floors in situations where a heavy domestic application is anticipated.

Monarfloor® Deck 22 may be used over 18mm chipboard, OSB board or a decking ply sub floor.

When installed as part of a complete sound reduction system it enables a concrete or timber floor to meet the sound transmission regulations of Part E.

Construction

Monarfloor® Deck 22 is a composite tongue and groove flooring system consisting of an 8mm layer of LRAC foam bonded with a high performance water based adhesive to 22mm V313 P5 chipboard.

For full details refer to our Product Information and Safety Data Sheet.

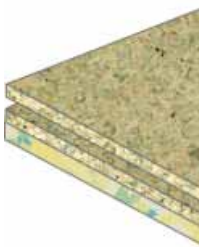
Features and Benefits

- **Supports floor loadings defined in BS: 6399-1: 1996**
- **Superior performance** – the recycled Low Resonance Acoustic Chip (LRAC) foam used has excellent impact improvement characteristics and superior stability within a single layer.
- **Flame retardant** – all LRAC foam used in Monarfloor® systems is flame retardant.
- **Quality assured** – Monarfloor® products meet all current standards.

Product Data

Board Size	2400mm x 600mm
Thickness	30mm
Board Weight	29.90kg
Weight/m²	20.76kg
DnT,w	58dB
DnT,w + Ctr	49dB
L'nT,w	49dB

Performance based on PCT test evidence



Installation

See over for details.

Monarfloor® Deck 22 System

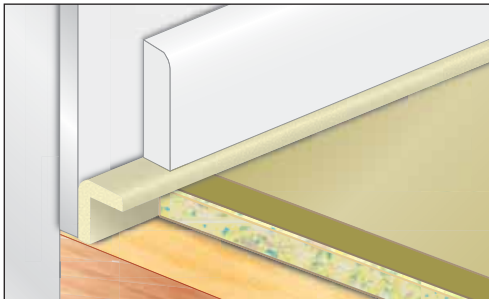
Installation at a glance

- Flank all perimeter with Monarfloor® Flanking Band.
- Lay Monarfloor® Deck 22 over existing floor in a broken bond pattern, applying Monarfloor® Adhesive to all tongue and groove panel joints.
- Install skirting and trim off excess Flanking Band.

For full details including advice on services and penetrations refer to our Deck 22 Installation Sheet or visit our website: www.monarfloor.co.uk

Related Products

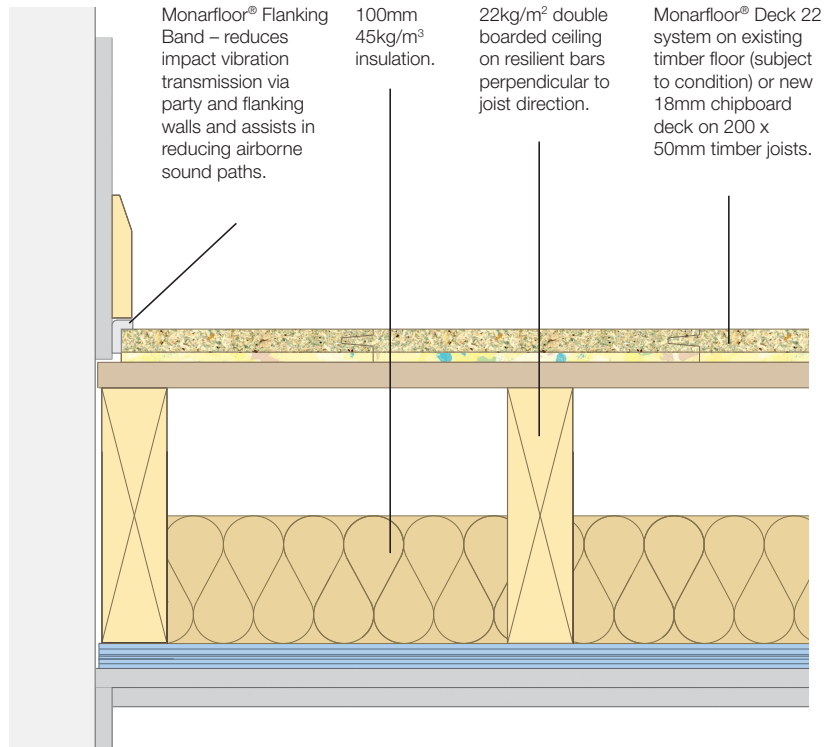
- **Monarfloor® Flanking Band** – reduces impact vibration transmission via party and flanking walls and assists in reducing airborne sound paths.



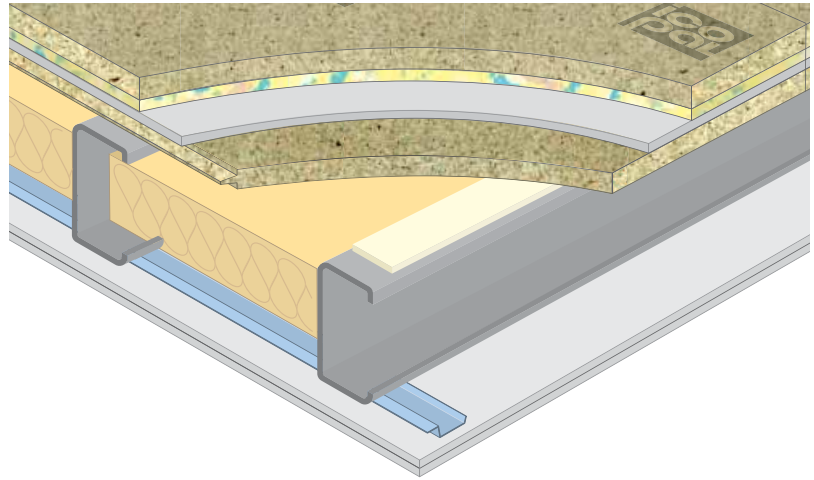
For full details refer to our Monarfloor® Flanking Band Data Sheet.

- **Monarfloor® Adhesive**

For full details refer to our Monarfloor® Adhesive Data Sheet.



Monarfloor® Deck 22 on a timber sub-floor with a resilient bar ceiling.



Monarfloor® Deck 22 on a timber sub-floor supported by steel joists.

Technical Support

Monarfloor® Acoustic Systems offers FREE technical advice and assistance on all aspects of acoustic systems.

We can also undertake site visits to provide contractors with advice and assistance at every stage of a project from concept to completion.

NOTE: This information is given in good faith being based on the latest knowledge known to Monarfloor® Acoustic Systems. Whilst every effort has been made to ensure the contents of the publication are current while going to press, customers are advised that products, techniques and Codes of Practice are under constant review and liable to change without notice. Up to date information is available from our Technical Services Department on request.

Responsibility cannot be accepted for the application of products, and no claims can be considered, where the manufacturer's instructions have not been followed. The user should not assume; based on information provided in this sheet, that the product is suitable for any abnormal use.

All products are sold subject to our standard terms and conditions of sale, a copy of which is available on request.

Icopal Limited

Barton Dock Road, Stretford, Manchester M32 0YL
Telephone: 0161 866 6540
Fax: 0161 866 6527
Email: acoustics.uk@icopal.com



For further information call 0161 866 6540
or visit www.monarfloor.co.uk