

Monarfloor® Acoustic Cradle System

FFT2 Resilient cradle and batten system.

The Monarfloor® Acoustic Cradle System is designed to reduce sound transmission through concrete or timber floors in situations where the sub-floor is uneven, has a camber or a void is required for services etc.

The Monarfloor® Acoustic Cradle System consists of two components, the Monarfloor® Acoustic Cradle which reduces the sound transmission and holds the timber battens, and Monarfloor® Acoustic Cradle Packers which are used to level the battens at each cradle.

When installed as part of a complete sound reduction system it enables a concrete or timber floor to meet the sound transmission regulations of Part E.

Construction

The Monarfloor® Acoustic Cradle System has two components:

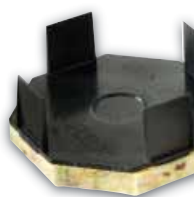
- **Monarfloor® Acoustic Cradle** consists of a 10mm layer of LRAC foam type IV bonded to an injected moulded plastic cradle.
- **Monarfloor® Acoustic Cradle Packers** are manufactured from an injected moulded plastic and are available in 3 heights.

For full details refer to our Product Information and Safety Data Sheet.

Product Data

Size	105mm x 105mm
Height	60mm minimum (includes timber batten)
DnT,w + Ctr L'nT,w	Complies with Robust Detail Ref E-FS-1; E-FC-1 and E-FC-2 performance
Performance based on PCT and Lab test evidence	

Size	105mm x 105mm
Height	2mm, 3mm and 5mm available



Monarfloor®
Acoustic
Cradle



Monarfloor®
Acoustic
Cradle Pads

Installation

See over for details.



Monarfloor® Acoustic Cradle System

Installation at a glance

- Flank all perimeter with Monarfloor® Flanking Band.
- Set out Monarfloor® Acoustic Cradles at between 450mm to 600mm centres on the sub-floor.
- Fit 45 x 45mm softwood battens into the Acoustic Cradles.
- Use Monarfloor® Acoustic Cradle Packers to level the battens at each cradle.
- Overlay the battens with an 18mm or 22mm chipboard deck laid in a broken bond pattern with all joints supported and glued.
- Install skirting and trim off excess flanking band.

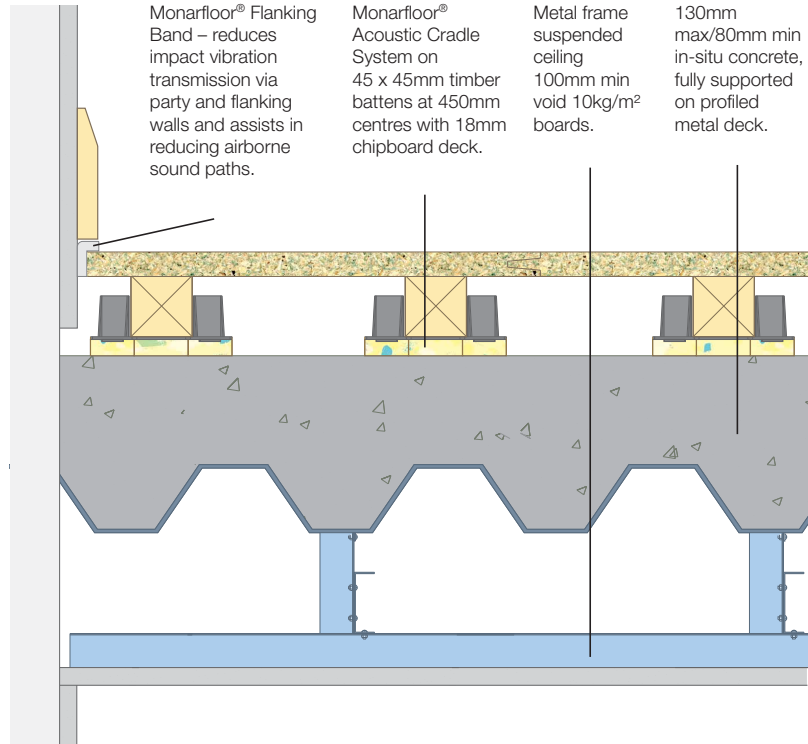
For full details refer to our Monarfloor® Acoustic Cradles System Installation Sheet or visit our website:
www.monarfloor.co.uk

Related Products

- **Monarfloor® Flanking Band** – reduces impact vibration transmission via party and flanking walls and assists in reducing airborne sound paths.
For full details refer to our Monarfloor® Flanking Band Data Sheet.
- **Monarfloor® Adhesive**
For full details refer to our Monarfloor® Adhesive Data Sheet.

Icopal Limited

Barton Dock Road, Stretford, Manchester M32 0YL
Telephone: 0161 866 6540
Fax: 0161 866 6527
Email: acoustics.uk@icopal.com



Monarfloor® Acoustic Cradle on a profiled metal deck/concrete floor with MF ceiling (Robust Details E-FS-1 with FFT2 Floating Floor).

Technical Support

Monarfloor® Acoustic Systems offers FREE technical advice and assistance on all aspects of acoustic systems.

We can also undertake site visits to provide contractors with advice and assistance at every stage of a project from concept to completion.

NOTE: This information is given in good faith being based on the latest knowledge known to Monarfloor® Acoustic Systems. Whilst every effort has been made to ensure the contents of the publication are current while going to press, customers are advised that products, techniques and Codes of Practice are under constant review and liable to change without notice. Up to date information is available from our Technical Services Department on request.

Responsibility cannot be accepted for the application of products, and no claims can be considered, where the manufacturer's instructions have not been followed. The user should not assume; based on information provided in this sheet, that the product is suitable for any abnormal use.

All products are sold subject to our standard terms and conditions of sale, a copy of which is available on request.