

Timber Stud Partition

To be built off Sub-Floor only

Use the same detailing for lightweight steel studwork, and other timber sub-floors

Unfaced mineral wool batts, density dependant on construction detail. (refer to specification)

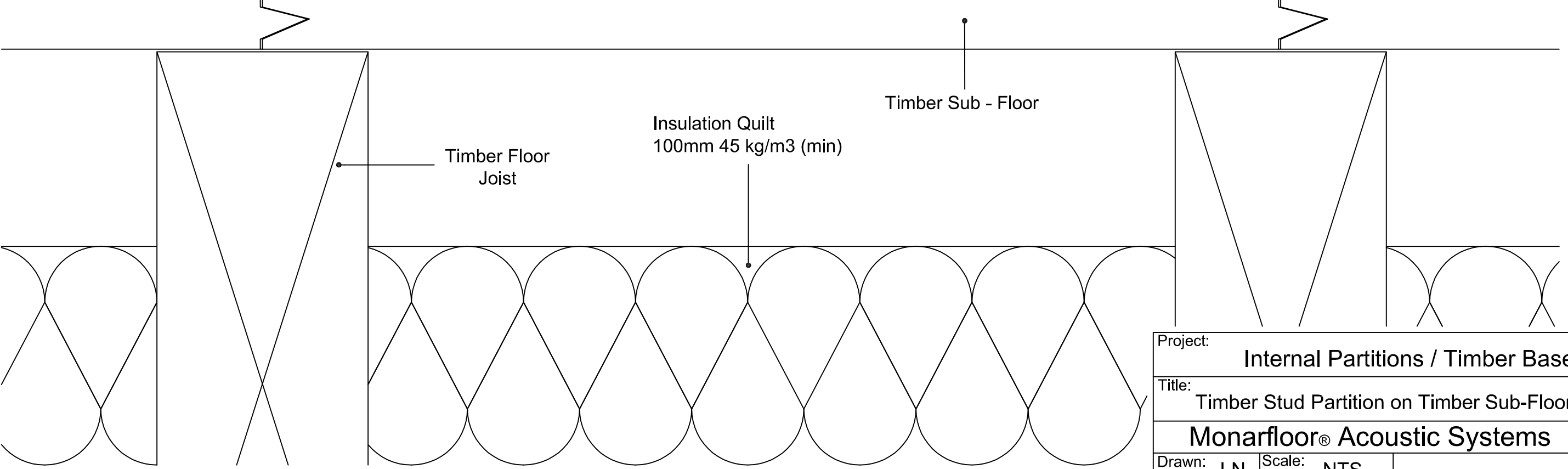
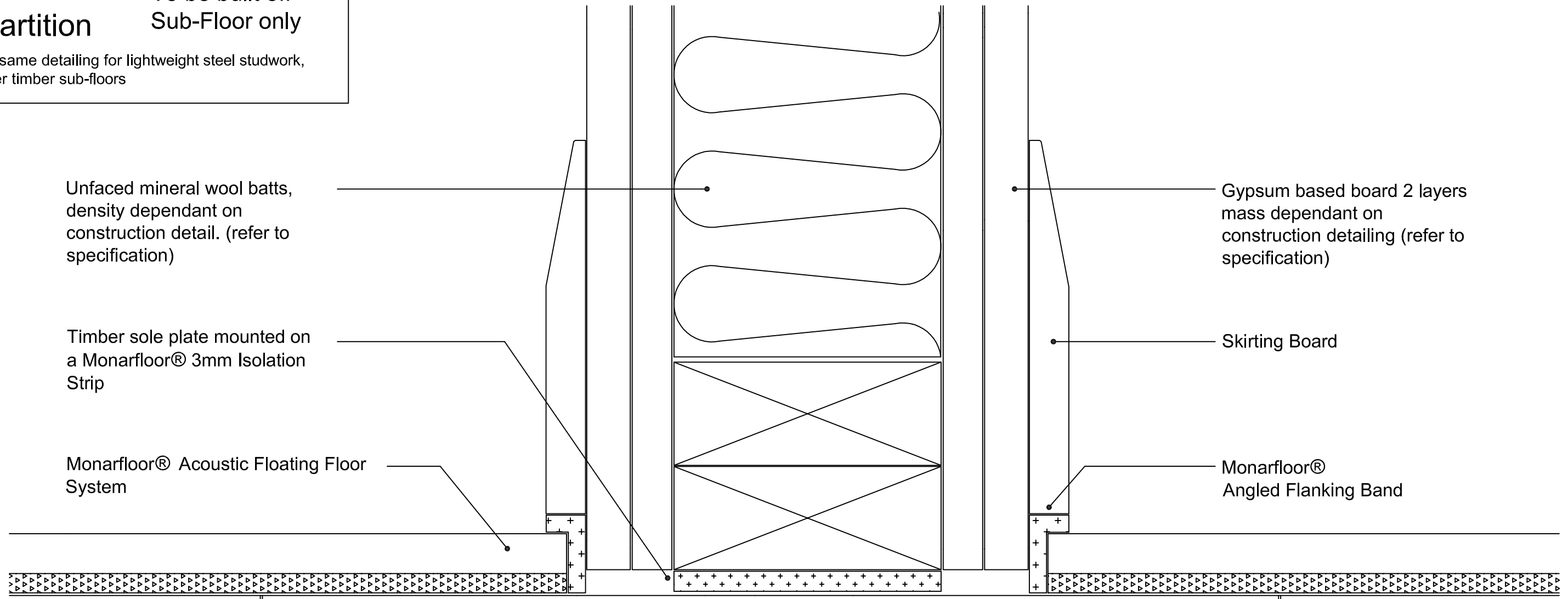
Timber sole plate mounted on a Monarfloor® 3mm Isolation Strip

Monarfloor® Acoustic Floating Floor System

Gypsum based board 2 layers mass dependant on construction detailing (refer to specification)

Skirting Board


Monarfloor® Angled Flanking Band



Insulation Quilt
100mm 45 kg/m3 (min)

Timber Floor Joist

Timber Sub - Floor

Project:		Internal Partitions / Timber Base	
Title:		Timber Stud Partition on Timber Sub-Floor	
		Monarfloor® Acoustic Systems 	
Drawn:	LN	Scale:	NTS
Date:	July 2008		ICO1528 - Issue 2