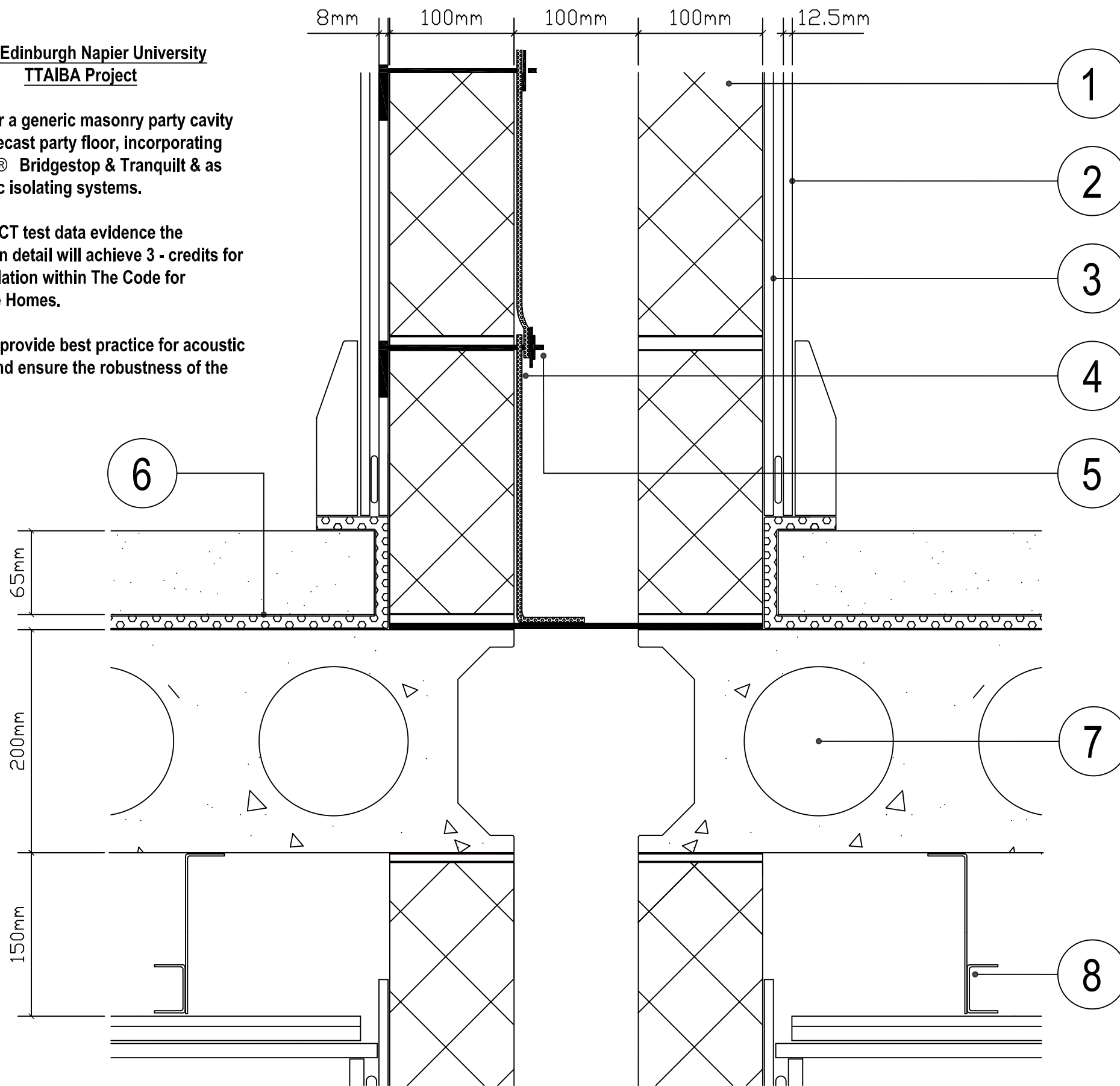


Detailing for a generic masonry party cavity wall and precast party floor, incorporating Monarfloor® Bridgestop & Tranquilt & as the acoustic isolating systems.

Based on PCT test data evidence the construction detail will achieve 3 - credits for sound insulation within The Code for Sustainable Homes.

The details provide best practice for acoustic isolation, and ensure the robustness of the installation



Separating Masonry Party Cavity Wall with Precast Concrete Plank Party Floor

The construction detailing is for illustration purposes only. Other concrete floor and masonry wall detailing is acceptable - please refer to Monarfloor Technical Department

This detailed drawing is to recommend the correct procedures for installing MONARFLOOR products. All other building details are shown indicatively and are not to be used for building construction

Key Notes:

- ① AGGREGATE BLOCKS
(Acceptable for use within the system)
Dense Aggregate 1850 - 2300 kg/m³
Lightweight Aggregate 1350 - 1600 kg/m³
Besblock "Star Performer"
- ② Gypsum - based board (nominal 8kg/m²) on dabs (or 13mm plaster)
- ③ Nominal 8mm render coat with gypsum - based board (nominal 8 kg/m²) mounted on dabs.
- ④ Monarfloor® Bridgestop Quilt in two lifts to prevent mortar droppings touching both masonry skins.
- ⑤ Monarfloor® Bridgestop Tie with render depth marker, to penetrate at 450mm centers (max). Ties are reversible.
- ⑥ Monarfloor® Tranquilt, with integrated flanking / upstanding and jointing laid over precast floor plank, with 65mm (min) Sand : Cement, or 40mm (min) proprietary 'flow' floating screed, nominal 80 kg/m² mass per unit area.
- ⑦ 200mm (min) 'Housing' grade precast concrete floor plank, 300 kg/m² (min) mass per unit area, supported by the load bearing party cavity walls and flanking walls. 365 kg/m² plank is preferable for sites wishing to achieve higher code credits for sound insulation.
- ⑧ Metal Ceiling System with 100mm (min) ceiling void and one layer of nominal 10 kg/m² gypsum - based board.

Construction Notes:


Staifix HRT4 wall ties, or equivalent (TYPE A) should be used in conjunction with the Bridgestop System, and punctured through at 900mm centers

Project: **Icopal / Napier Joint Development**

Title: **Generic Party Wall / Party Floor detail - CfSH 3 Credit System**

Building Performance Center 

Edinburgh Napier  UNIVERSITY

Monarfloor® Acoustic Systems 

Drawn: **LN** Scale: **NTS**

Date: **August 2009**

ICO1998 - issue 1

© THIS DRAWING AND DESIGN THEREIN IS THE EXCLUSIVE PROPERTY OF ICOPAL – MONARFLOOR ACOUSTIC SYSTEM. IT SHOULD NOT BE COPIED OR REPRODUCED WITHOUT CONSENT AND SHALL BE USED ONLY IN REFERENCE TO MATERIALS OR GOODS SUPPLIED BY THEM.

This drawing has been prepared for general information purposes only. (Do not scale)