

Icopal Ltd

Barton Dock Road
Stretford, Manchester
M32 0YL.
Telephone:
0161 865 4444
Fax:
0161 866 9859
Technical Fax:
0161 865 8433
Email:
info.uk@icopal.com
www.icopal.co.uk

Help and Advice

To assist both specifiers and contractors, Icopal offers FREE technical support and advice on all aspects of waterproofing.

For further information call our advice line on **0161 865 4444** or visit

www.icopal.co.uk

Flat Roofing

Your guide to Icopal waterproofing membranes and accessories.



Dealer/Distributor

Every effort has been taken in the preparation of this leaflet to ensure the accuracy of representations contained herein. Recommendations as to the use of materials, construction details and methods of installation are given in good faith and relate to typical situations. However, every site has different characteristics and reliance should not be placed upon the forgoing recommendations. Advice can be given as to specific applications of the products upon request.



Traditional Roofing Felt

Pour & Roll Membranes

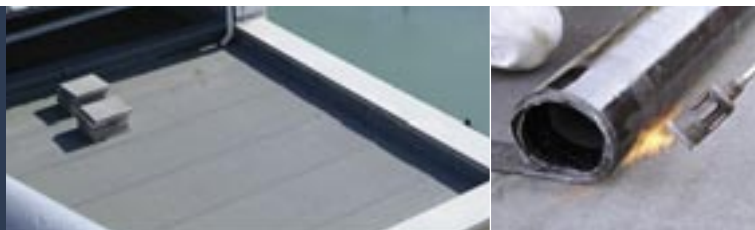
Torch Applied Membranes

Self-adhesive Membranes



Flat Roofing

A range of built up flat roof waterproofing membranes developed to suit all applications



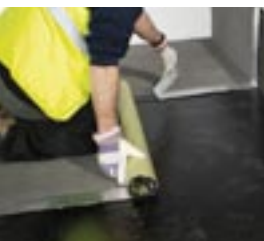
The Icopal range of waterproofing membranes has been developed to provide a comprehensive range of products to suit all applications; from Shed and Kennel felt for basic DIY application through to self adhesive systems for the more experienced DIY applicator and professional roofer.



Also within the range are membranes for application by experienced roofing contractors including fully guaranteed membranes manufactured on high tensile polyester reinforcements and high performance polymer modified bitumen for pour and roll, torch-on and self-adhesive applications.



To compliment these waterproofing membranes is a range of primers, mastics, solutions and compounds for the preparation of the roofing substrate and repairs to older roofs.



Roof detailing is also made easier with a comprehensive range of roofing accessories for drainage, pedestrian walkways, service entry for pipes and cables as well as a range of versatile plant support equipment.

Finishes for roof edges are catered for with a range of GRP roof edge trims providing a neat and pleasing finish.

Contents

Design Considerations & Good Roofing Practice	6
Anderson Traditional Range	10
Economical fibre based roofing membranes coated with oxidised bitumen	
High Tensile Pour & Roll Range	12
Glass and polyester reinforced membranes coated with oxidised bitumen	
SBS Modified Bitumen Pour & Roll Range	14
Glass and polyester reinforced membranes coated with SBS modified bitumen	
APP Modified Bitumen Torch Applied Range	18
Glass and Polyester reinforced membranes coated with APP modified bitumen	
SBS Modified Bitumen Torch Applied Range	20
Glass and polyester reinforced membranes coated with SBS modified bitumen	
SBS Advanced Bitumen Torch Applied Range	22
Low melt reinforced SBS bitumen membranes featuring stripes and groove technology	
■ Capsheet Range	24
■ Total Torch System	26
■ TorchSafe System	28
Anderson SafeSeal Self-adhesive System	30
An economical, clean, safe and simple approach to flat roof waterproofing	
Ancillary Products	34
Flat Roof Accessories	36

See over for flat roofing products at a glance. ▶▶▶▶▶

Product Code	Product Name	Roll Size	Surface Finish	See Page
--------------	--------------	-----------	----------------	----------

Anderson Traditional Bitumen Range

Capsheets

2002650	Anderson Green Traditional	1m x 10m	Green Mineral	11
2000075	Anderson Shed & Kennel	1m x 5m	Green Mineral	11
2002731	Anderson Shed & Kennel	1m x 10m	Green Mineral	11

Underlays

2002597	Anderson Lightweight	1m x 10m	Sand	11
2002599	Anderson Traditional	1m x 10m	Sand	11
2002651	Anderson Traditional	1m x 20m	Sand	11

High Tensile Pour & Roll Bitumen Range

Capsheets

2002601	Anderson HT 180	1m x 10m	Green Mineral	13
2002604	Anderson HT 250	1m x 10m	Green Mineral	13
2002711	Anderson HT 350	1m x 8m	Sand	13
2000230	Anderson HT 350	1m x 8m	Green Mineral	13

Underlays

2000234	Anderson HT 125	1m x 16m	Sand	13
2002600	Anderson HT 180	1m x 20m	Sand	13
2002602	Anderson HT 250	1m x 20m	Sand	13

Preparation Layers

2002652	Anderson 3B	1m x 20m	Sand	13
2002700	Anderson 3G	1m x 10m	Perforated	13
2002701	Anderson 3H	1m x 20m	Perforated	13

SBS Modified Bitumen Pour & Roll Range

Capsheets

2000165	Anderson Glastex	1m x 10m	Green	15
2003154	Anderson Polyfex	1m x 10m	Green	15
2000201	Anderson Polyfex	1m x 10m	Blue/Grey	15
2000367	Power Elastomeric 250	1m x 8m	Green	16
2000365	Power Elastomeric 250	1m x 8m	Blue/Grey	16
2000366	Power Elastomeric 250	1m x 8m	Brown	16
2000369	Power Elastomeric 350	1m x 8m	Green	16
2000371	Power Elastomeric 350	1m x 8m	Blue/Grey	16
2003028	FireSmart® Power Elastomeric	1m x 8m	Green	16
2003027	FireSmart® Power Elastomeric	1m x 8m	Blue/Grey	16
2003029	FireSmart® Power Elastomeric	1m x 8m	Brown	16
2003041	FireSmart® Infinity Elastomeric	1m x 8m	Green	17
2003042	FireSmart® Infinity Elastomeric	1m x 8m	Brown	17
2003040	FireSmart® Infinity Elastomeric	1m x 8m	Blue/Grey	17

Underlays

2000164	Anderson Glastex	1m x 20m	Sand	15
2003151	Anderson Polyfex	1m x 20m	Sand	15
2000360	Power Elastomeric 180	1m x 16m	Sand	16
2000364	Power Elastomeric 250	1m x 16m	Sand	16

Vapour Control Layers

2000141	Anderson Vapourbar	1m x 20m	Sand	17
2002715	Anderson Vapourflex	1m x 20m	Sand	17

APP Modified Bitumen Torch Applied Range

Capsheets

3005495	Anderson APP	1m x 8m	Plain	19
3005490	Anderson APP	1m x 8m	Green	19
3004977	Performa APP	1m x 8m	Sand	19
3004920	Performa APP	1m x 8m	Green	19
3004978	GAPP APP	1m x 8m	Plain	19

Product Code	Product Name	Roll Size	Surface Finish	See Page
--------------	--------------	-----------	----------------	----------

3004916	GAPP APP	1m x 8m	Green	19
---------	----------	---------	-------	----

3004917	GAPP APP	1m x 8m	Brown	19
---------	----------	---------	-------	----

Underlays

3004913	Anderson Universal APP	1m x 16m	Film	19
---------	------------------------	----------	------	----

Preparation Layers

2000320	Anderson VBL Torch-on	1m x 20m	Perforated	19
---------	-----------------------	----------	------------	----

SBS Modified Bitumen Torch Applied Range

Capsheets

2000312	Anderson SBS	1m x 8m	Sand	21
2000225	Anderson SBS	1m x 8m	Green	21
2003688	Anderson SBS	1m x 8m	Blue/Grey	21
2003689	Anderson SBS	1m x 8m	Brown	21
2003690	Anderson SBS	1m x 8m	Charcoal	21
2003400	Performa SBS	1m x 8m	Sand	21
2003401	Performa SBS	1m x 8m	Green	21
2003403	Performa SBS	1m x 8m	Blue/Grey	21
2003404	Performa SBS	1m x 8m	Brown	21
2003418	Performa SBS	1m x 8m	Charcoal	21

Underlays

2002718	Anderson Universal SBS	1m x 16m	Film	21
2002722	Anderson Premium SBS	1m x 16m	Film	21

SBS Advanced Bitumen Torch Applied Range

Capsheets

2002703	Tecnatorch SBS	1m x 7.5m	Sand	24
2002705	Tecnatorch SBS	1m x 7.5m	Green	24
2002704	Tecnatorch SBS	1m x 7.5m	Blue/Grey	24
2002707	Tecnatorch SBS	1m x 7.5m	Brown	24
2003538	Tecnatorch SBS	1m x 7.5m	Charcoal	24
2002706	Tecnatorch SBS	1m x 7.5m	White	24
2003031	FireSmart® Tecnatorch	1m x 7.5m	Green	24
2003030	FireSmart® Tecnatorch	1m x 7.5m	Blue/Grey	24
2003032	FireSmart® Tecnatorch	1m x 7.5m	Brown	24
2000347	Olympic Thermaweld	1m x 8m	Green	24
2000344	Olympic Thermaweld	1m x 8m	Blue/Grey	24
2000354	Olympic Thermaweld	1m x 8m	Brown	24
2003081	FireSmart® Olympic Thermaweld	1m x 8m	Green	25
2003080	FireSmart® Olympic Thermaweld	1m x 8m	Blue/Grey	25
2003082	FireSmart® Olympic Thermaweld	1m x 8m	Brown	22
2003050	FireSmart® Infinity	1m x 7m	Green	25
2003049	FireSmart® Infinity	1m x 7m	Blue/Grey	25
2003051	FireSmart® Infinity	1m x 7m	Brown	25

Underlays

2002780	Total Torch Vapour Dispersion Layer	1m x 8m	Sand	25, 27
3004905	TorchSafe Underlay	1m x 10m	Polypropylene Fleece	25, 29
3005215	TorchSafe Detailing Underlay	1m x 10m	Polypropylene Fleece	25, 29

Vapour Control Layers

2002781	Total Torch Vapour Control Layer	1m x 8m	Sand	25, 27
3004906	TorchSafe Vapour Control Layer	1m x 7.5m	Sand	25, 29
2002717	Icopal Torch-on Vapour Check	1m x 16m	Sand	25

Anderson SafeSeal Self-adhesive Bitumen System

Capsheets

3005073	SafeSeal Capsheet	1m x 6m	Blue/Grey	32
---------	-------------------	---------	-----------	----

Underlays

3005074	SafeSeal Underlay	1m x 8m	Film	32
---------	-------------------	---------	------	----

Design Considerations & Good Roofing Practice



This section is designed to provide general guidance on the design and installation of the Reinforced Bitumen Roofing Membranes contained within this brochure.

For further information or specific advice contact Icopal Technical Services on 0161 865 4444.

Structural Decks – concrete, timber boarding, plywood, OSB 3 and profiled metal decking are the most common types of structural deck used for flat roofing. It is important to carefully select the type of structural deck material to suit the use of the roof and its capability to withstand imposed loads and any possible snow loading etc.

Roof Types

There are generally three types of flat roof construction:

Warm Roof – thermal insulation is positioned above the roof deck and vapour control layer and immediately below the waterproofing, resulting in the structural deck and ceiling being at a temperature close to that of the interior of the building. Ventilation of the roof void is not required. However due consideration must be given to providing a minimum upstand requirement of 150mm above the finished roof level for all details.

Cold Roof – this type of roof must be carefully designed to avoid premature failure and should be avoided wherever possible. Thermal Insulation is positioned immediately above the ceiling, resulting in the roof covering and structural deck being substantially colder in winter than the interior of the building. It is important that a minimum 50mm void is allowed between the top of the insulation and the roof deck; this void must be ventilated and cross ventilation must be provided with a minimum 25mm continuous opening at eaves on opposing sides of the roof and the provision for venting between joists. If eaves cross ventilation is not possible proprietary roof vent systems must be installed.

Inverted roofs – thermal insulation is positioned above the roof covering, resulting in the roof covering, structural deck and ceiling being at a temperature close to that of the interior of the building. The insulation type for use on inverted roofs must be extruded polystyrene (XPS) and is secured by ballast loading.

Note: the roof deck must be capable of withstanding the additional loading of a ballasted roof.

Thermal Insulation – new and refurbished roofs will need to be insulated to meet the requirements of the current Building Regulations. ($0.25W/m^2 \text{ } ^\circ C$). Specific guidance on the calculation of thermal transmittance (“U”) values and condensation risk within a structure can be found in the current issue of BS6229.

Specific U-Value calculations can be provided by Icopal Technical Services.

Wind Action – the design of the roof structure and choice of waterproofing system must make allowance for wind forces which can have a significant effect on roof coverings, particularly during winter gales and in exposed locations. Attachment of roofing systems should comply with the current recommendations of BS 8217.

Specific wind uplift calculations can be provided by Icopal Technical Services.

Fire – the fire requirements of the current Building Regulations must be taken into consideration when designing the roof and waterproofing system. These requirements are based on the performance of the roof structure as submitted for assessment in accordance with BS476:Part 3:2004 – fire tests on building materials and structures – Part 3: Classification and method of test for external fire exposure to roofs.

An Ext. F.A.A, F.A.B or F.A.C result will normally allow unrestricted use and Icopal High Performance Waterproofing Systems will achieve one of these results.

Installation

Cover Flashing – prior to the application of the waterproofing membranes suitable chases should be cut to receive FormFlash flashing installed in accordance with current Icopal instructions. All chases must be positioned a minimum of 150mm above the proposed finished level of the roof surface.

Substrates – all substrates to receive the waterproofing membranes must be clean, free from oil, grease and sharp projections, all mechanical fixings used to secure the roof deck must be well driven to prevent fixings puncturing the membranes.

Surface Preparation – metal, concrete, and screeded surfaces, plywood, OSB3 and masonry should be primed with either; Xtra-Seal SF Bitumen Primer, Xtra-Seal QD Bitumen Primer or Xtra-Seal Bitumen Primer in accordance with the coverage rates and instructions on the containers.

Membrane Attachment – on plywood, OSB3, concrete, and screeded surfaces the first layer of waterproofing must be partially bonded using the appropriate preparation layer. When using the pour and roll method of application the preparation layer should be Anderson 3G; for Torch-on application Anderson VBL – (Torch-on Venting Base Layer) can be used. If using specific torch-on systems the corresponding preparation layer is required. It should be noted that when applying the waterproofing system over Polyurethane (PUR) or Polyisocyanurate (PIR) the waterproofing must be partially bonded as described above. Timber boarded decks require the first layer of waterproofing to be nailed at 150mm staggered centres over the field area and at 50mm centres along side and end laps. Pour and roll systems require a layer of HT 125 Polyester Underlay to be nailed whereas a torch-on system will require the use of HT 180 Polyester Underlay nailed. On metal decks the waterproofing system is laid over the chosen insulation, which is laid onto a vapour control layer bonded to the primed metal deck.

Waterproofing layers are laid with 75mm side laps and 100mm end laps (or as otherwise specified) and fully sealed. Successive layers of waterproofing are applied with side lap joints offset by 300mm and end laps must also be offset from the previous layers to avoid a build up of joints in successive layers. When applying waterproofing membranes using the pour and roll method of application 95/25 grade bitumen should be used on roofs up to and including 5° pitch and 115/15 grade bitumen over 5° pitch. End/head laps on membranes applied on roofs over 5° pitch must be mechanically fixed. When applying waterproofing membranes by torching it is essential that the thermofusible film is completely dispersed and a 5mm bead of bitumen extrudes from all laps as work proceeds.

Technical Support

For detailed application and specification details refer to specific product literature and/or product data sheets. Icopal Technical Area Managers are available to offer full technical guidance, roof surveys and condition reports supported by written reports for both existing roofs for refurbishment or new build roof construction and waterproofing specifications. In addition Icopal Technical Services can provide detailed thermal insulation calculations and condensation risk analysis. Individual CAD detail drawings can also be provided for all roofing details.

Useful references;

- BS 8747:2007 Reinforced bitumen membranes (RBM's) for roofing – Guide to selection and specification.
- BS 8217:2005 reinforced bitumen membrane for roofing – Code of practice.
- BS 6229:2003 Flat roofs with continuously supported coverings – Code of practice.
- BS 8000:Part 4: 1989 Workmanship on building sites – Part 4 Code of practice for waterproofing.
- BS 476-3:2004 Fire tests on building materials and structures – Part 3 Classification and method of test for external fire exposure to roofs.
- BS EN 13707:2004 Flexible sheets for waterproofing – Reinforced bitumen sheets for roof waterproofing – Definitions and characteristics.

Anderson Traditional Range

Economical fibre based roofing coated with oxidised bitumen.



Nailed or
Bonded
Application

Application

- Nailed with galvanised clout nails.
- Bonded with Icopal Xtra-Seal Roofing Felt Adhesive or Hot Bitumen Compound

Typical Uses

- Sheds
- Garden buildings
- Non habitable buildings

Life Expectancy

- 5 Years

Typical Applications

Single Layer Waterproofing for Sheds, Kennels & Hutches etc. with roof pitches over 20°

- 1 Anderson Shed and Kennel Capsheets

Two Layer Waterproofing on Timber Boards

- 1 Anderson Green Capsheet, bonded
- 2 Anderson Traditional Underlay, nailed

Three Layer Waterproofing on Plywood

- 1 Anderson Green Capsheet, bonded
- 2 Anderson Traditional Underlay, bonded
- 3 Anderson Lightweight Underlay, bonded
- 4 Anderson HT Taping Strip to board joints

Traditional Products Range

Anderson Shed & Kennel Capsheets

- Light yet durable
- Fibre reinforced
- Fine green mineral finish



Product Availability

Product	Roll Width/Length/Weight	Product Code
Anderson Shed & Kennel Capsheet	1m x 5m / 10kg	2000075
Anderson Shed & Kennel Capsheet	1m x 10m / 22kg	2002731

Anderson Traditional Underlays

- Available in lightweight and standard weight
- Fibre reinforced
- Sanded finish



Product Availability

Product	Roll Width/Length/Weight	Product Code
Anderson Lightweight Underlay	1m x 10m / 14kg	2002597
Anderson Traditional Underlay	1m x 10m / 16kg	2002599
Anderson Traditional Underlay	1m x 20m / 32kg	2002651

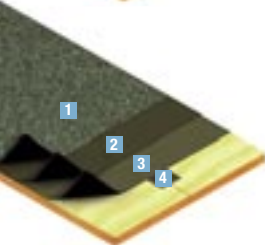
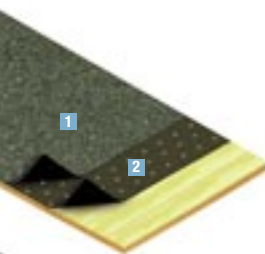
Anderson Green Capsheets

- Heavy weight
- Fibre reinforced
- Green mineral finish



Product Availability

Product	Roll Width/Length/Weight	Product Code
Anderson Green Traditional Capsheet	1m x 10m / 38kg	2002650



High Tensile Range

Glass and polyester reinforced membranes coated with oxidised bitumen.



Pour & Roll
or Cold
Applied



Application

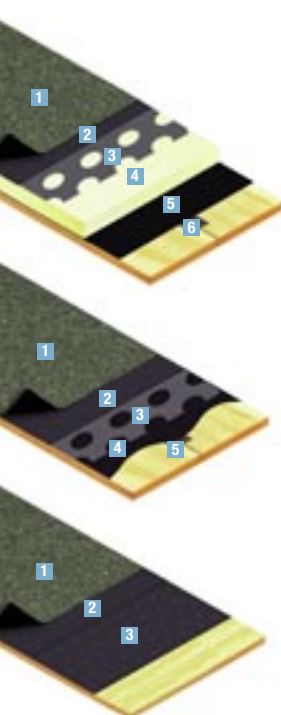
- Pour and roll in a hot bitumen compound
- Cold applied in Xtra-Seal Roofing Felt Adhesive

Typical Uses

- Garages
- Extensions/workshops
- Garden buildings

Product Guarantee

- 10 years (life expectancy 20 years)
- BBA Approved



Typical Build-ups

Warm Roof, Plywood Deck, Bitumen Bonded

- 1 Anderson HT 250 or 350 Capsheet
- 2 Anderson HT 180 Underlay
- 3 Anderson 3G Preparation Layer
- 4 Thermazone Roofboard
- 5 Vapourbar Vapour Control Layer
- 6 Anderson HT Taping Strip to board joints

Cold Roof, Plywood Deck, Bitumen Bonded

- 1 Anderson HT 250 or 350 Capsheet
- 2 Anderson HT 180 Underlay
- 3 Anderson 3G Preparation Layer
- 4 Xtra-Seal QD Bitumen Primer
- 5 Anderson HT Taping Strip to board joints

Cold Roof, Timber Board Deck, Cold Adhesive

- 1 Anderson HT 250 or 350 Capsheet
- 2 Anderson HT 180 Underlay
- 3 Anderson HT 125 Underlay-Nailed

Product Range

Anderson Preparation Layers

- Available in standard or perforated
- Glass reinforced



Product Availability

Product	Roll Width/Length/Weight	Product Code
Anderson 3B	1m x 20m / 36kg	2002652
Anderson 3G Perforated	1m x 10m / 25kg	2002700
Anderson 3H Perforated	1m x 20m / 34kg	2002701

Anderson HT Range

- Underlays and capsheets available
- Choice of weights
- Polyester reinforced
- Underlays sand finished
- BBA Approved



Product Availability

Product	Roll Width/Length/Weight	Product Code
Anderson HT 125 Underlay	1m x 16m / 29kg	2000234
Anderson HT 180 Underlay	1m x 20m / 36kg	2002600
Anderson HT 250 Underlay	1m x 20m / 40kg	2002602
Anderson HT 180 Capsheet – Green Mineral	1m x 10m / 35kg	2002601
Anderson HT 250 Capsheet – Green Mineral	1m x 10m / 36kg	2002604
Anderson HT 350 Capsheet – Sand	1m x 8m / 34kg	2002711
Anderson HT 350 Capsheet – Green Mineral	1m x 8m / 38kg	2000230

SBS Modified Bitumen Range

Polyester and glass reinforced membranes coated with SBS modified bitumen.



Pour & Roll
SBS



Application

- Pour and roll in hot bitumen compound

Typical Uses

- Garages
- Extensions/workshops
- General roofing

Product Guarantee

- 10 years (life expectancy 20 years)

Typical Build-ups

Warm Roof, Plywood Deck, Bitumen Bonded

- 1 Anderson Polyflex/Glastex Capsheet
- 2 Anderson Polyflex/Glastex Underlay
- 3 Anderson 3G Preparation Layer
- 4 Thermazone Roofboard
- 5 Vapourbar Vapour Control Layer
- 6 Anderson HT Taping Strip to board joints

Cold Roof, Plywood Deck, Bitumen Bonded

- 1 Anderson Polyflex/Glastex Capsheet
- 2 Anderson Polyflex/Glastex Underlay
- 3 Anderson 3G Preparation Layer
- 4 Xtra-Seal QD Bitumen Primer
- 5 Anderson HT Taping Strip to board joints

Cold Roof, Timber Board Deck, Bitumen Bonded

- 1 Anderson Polyflex/Glastex Capsheet
- 2 Anderson Polyflex/Glastex Underlay
- 3 Anderson HT 125 Underlay, Nailed

Product Range

Anderson Glastex Range

- Underlay and capsheet available
- Glass reinforced
- SBS modified bitumen
- Sand finish underlay
- Green mineral finish capsheet



Product Availability

Product	Roll Width/Length Weight	Product Code
Anderson Glastex Underlay	1m x 20m / 36kg	2000164
Anderson Glastex Capsheet – Green Mineral	1m x 10m / 30kg	2000165

Anderson Polyflex Range

- Underlay and capsheets available
- Polyester reinforced
- SBS modified bitumen
- Sand finish underlays
- Green or Blue/Grey capsheets available



Product Availability

Product	Roll Width/Length Weight	Product Code
Anderson Polyflex Underlay	1m x 20m / 36kg	2003151
Anderson Polyflex Capsheet – Green Mineral	1m x 10m / 34kg	2003154
Anderson Polyflex Capsheet – Blue/Grey Mineral	1m x 10m / 34kg	2000201

SBS Modified Bitumen Range

High performance elastomeric membranes coated with SBS and FireSmart® bitumen SBS.



Pour & Roll
SBS

High Performance SBS Reinforced Membranes

- Excellent flexibility
- Exceptional tensile strength
- Dimensionally Stable
- Over 20 years life expectancy
- BBA Approved



Power Elastomeric

Product Availability		
Product	Roll Width/Length Weight	Product Code
Power Elastomeric 180 – Sanded	1m x 16m / 36kg	2000360
Power Elastomeric 250 – Sanded	1m x 16m / 40kg	2000364
Power Elastomeric 250 – Blue/Grey Mineral	1m x 8m / 30kg	2000365
Power Elastomeric 250 – Brown Mineral	1m x 8m / 30kg	2000366
Power Elastomeric 250 – Green Mineral	1m x 8m / 30kg	2000367
Power Elastomeric 350 – Green Mineral	1m x 8m / 38kg	2000369
Power Elastomeric 350 – Blue/Grey Mineral	1m x 8m / 38kg	2000371



FireSmart® Power Elastomeric

Product Availability		
Product	Roll Width/Length Weight	Product Code
FireSmart® Anderson Power Elastomeric – Blue/Grey Mineral	1m x 8m / 38kg	2003027
FireSmart® Anderson Power Elastomeric – Green Mineral	1m x 8m / 38kg	2003028
FireSmart® Anderson Power Elastomeric – Brown Mineral	1m x 8m / 38kg	2003029

FireSmart® Infinity Elastomeric

- Polyester reinforced
- SBS modified bitumen
- Sand finish underlays
- Green or Blue/Grey capsheets available



Product Availability

Product	Roll Width/Length Weight	Product Code
FireSmart® Infinity Elastomeric – Green Mineral	1m x 8m / 38kg	2003041
FireSmart® Infinity Elastomeric – Brown Mineral	1m x 8m / 38kg	2003042
FireSmart® Infinity Elastomeric – Blue/Grey Mineral	1m x 8m / 38kg	2003040

FireSmart® Capsheets

All the benefits of standard capsheets but incorporating Icopal's unique FireSmart® technology, producing capsheets that provide a fire protection layer, shielding the roof from both spread of flame and fire penetration. Ask for details.



Vapour Control Layers

For use with all pour & roll underlays and capsheets.



Product Availability

Product	Roll Width/Length Weight	Product Code
Anderson Vapourbar – Sand	1m x 20m / 36kg	2000141
Anderson Vapourflex – Sand	1m x 20m / 40kg	2002715

APP Modified Bitumen Range

APP bitumen modified with atactic polypropylene, characterised by a high heat resistance and plastomeric feel.



**Torch
Applied
APP**



Application

- Torch-on

Typical Uses

- Commercial or domestic

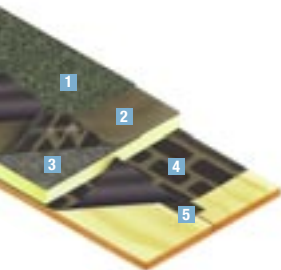
Product Guarantee

- 10 years (life expectancy 15 years)

Typical Build-ups

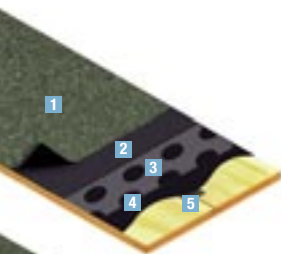
Warm Roof, Plywood Deck

- 1 Anderson APP/Performa APP/GAPP Capsheet
- 2 Total Torch Vapour Dispersion Layer
- 3 Thermazone Torch on Insulation
- 4 Anderson Total Torch Vapour Control Layer
- 5 Anderson HT Taping Strip to board joints



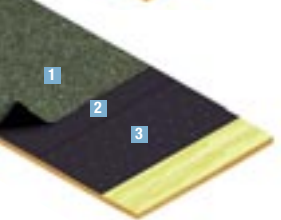
Cold Roof, Plywood Deck

- 1 Anderson APP/Performa APP/GAPP Capsheet
- 2 Universal APP Underlay
- 3 Anderson VBL Venting Base Layer
- 4 Xtra-Seal QD Bitumen Primer
- 5 Anderson HT Taping Strip to board joints



Cold Roof, Timber Boarded Deck

- 1 Anderson APP/Performa APP/GAPP Capsheet
- 2 Universal APP Underlay
- 3 Anderson HT 180 Underlay – Nailed



APP Range Features and Benefits

- High heat resistance
- Polyester reinforced
- Superior bond strength with film selvage
- Underlay film finished

Anderson APP Range

Product Availability		
Product	Roll Width/Length Weight	Product Code
Anderson APP Capsheet – Plain	1m x 8m / 32kg	3005495
Anderson APP Capsheet – Green Mineral	1m x 8m / 32kg	3005490

Performa APP Range

Product Availability		
Product	Roll Width/Length Weight	Product Code
Anderson Performa APP Capsheet – Sand	1m x 8m / 41kg	3004977
Performa APP Capsheet – Green Mineral	1m x 8m / 39kg	3004920

GAPP APP Range

Product Availability		
Product	Roll Width/Length Weight	Product Code
GAPP APP – Brown Mineral	1m x 8m / 39kg	3004917
GAPP APP – Green Mineral	1m x 8m / 39kg	3004916
GAPP APP – Plain	1m x 8m / 41kg	3004978

APP Underlay

Product Availability		
Product	Roll Width/Length Weight	Product Code
Universal APP Underlay	1m x 16m / 40kg	3004913

Preparation Layer

Product Availability		
Product	Roll Width/Length Weight	Product Code
Anderson VBL Torch-on Venting Base Layer	1m x 20m / 26kg	2000320

SBS Modified Bitumen Range

SBS bitumen is modified with Styrene Butadiene Styrene characterised by a softer more elastic feel.



**Torch
Applied
SBS**



Application

- Torch-on

Typical Uses

- Garages
- Extensions
- General roofing

Product Guarantee

- 10 years (life expectancy 15 years)

Typical Build-ups

Warm Roof, Plywood Deck

- 1 Anderson SBS/Performa SBS Capsheet
- 2 Total Torch Vapour Dispersion Layer
- 3 Thermazone Torch-on Insulation
- 4 Total Torch VCL
- 5 Anderson HT Taping Strip

Cold Roof, Plywood Deck

- 1 Anderson SBS/Performa SBS Capsheet
- 2 Total Torch Vapour Dispersion Layer
- 3 Xtra-Seal SF Bitumen Primer
- 4 Anderson HT Taping Strip to board joints

Cold Roof, Timber Boarded Deck

- 1 Anderson SBS/Performa SBS Capsheet
- 2 Premium SBS Underlay
- 3 Anderson HT 180 Underlay, Nailed

SBS Range Features and Benefits

- Requires less heat to apply
- Underlays and capsheets available
- Polyester reinforced
- Superior bond strength with film selvedge

Anderson SBS Range

Product Availability		
Product	Roll Width/Length Weight	Product Code
Anderson SBS Capsheet – Sand	1m x 8m / 32kg	2000312
Anderson SBS Capsheet – Green Mineral	1m x 8m / 38kg	2000225
Anderson SBS Capsheet – Blue/Grey Mineral	1m x 8m / 38kg	2003688
Anderson SBS Capsheet – Brown Mineral	1m x 8m / 38kg	2003689
Anderson SBS Capsheet – Charcoal Mineral	1m x 8m / 38kg	2003690

Performa SBS Range

Product Availability		
Product	Roll Width/Length Weight	Product Code
Performa SBS Capsheet – Sand	1m x 8m / 37kg	2003400
Performa SBS Capsheet – Green Mineral	1m x 8m / 39.5kg	2003401
Performa SBS Capsheet – Blue/Grey Mineral	1m x 8m / 39.5kg	2003403
Performa SBS Capsheet – Brown Mineral	1m x 8m / 39.5kg	2003404
Performa SBS Capsheet – Charcoal Mineral	1m x 8m / 39.5kg	2003418

Anderson Underlays

Product Availability		
Product	Roll Width/Length Weight	Product Code
Universal SBS Underlay	1m x 16m / 44kg	2002718
Premium SBS Underlay	1m x 16m / 38kg	2002722

Anderson SBS and Performa SBS Capsheets can also be used with Total Torch (see page 24) and TorchSafe (see page 26) systems.

SBS Advanced Bitumen Range

Advanced high performance SBS capsheets with groove technology.



**Torch
Applied
SBS**

Patented groove technology provides maximum adhesion with minimum energy use and is up to 30% faster to apply than traditional torch applied membranes.



Application

- Torch-on

Typical Uses

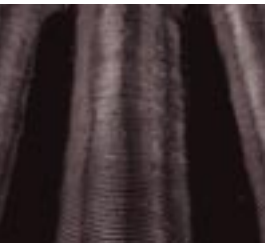
- Suitable for use in all built-up roofing applications

Product Guarantee

- 12 years (life expectancy 20 years when correctly installed and maintained)

Patented Grooves Technology

Only a minimal heat application is required to activate the unique adhesive properties of the special resin blend. The heat is channelled quickly along the grooves and disperses rapidly along the roll. This form of application ensures maximum adhesion with the minimum use of energy to provide a 100% secure bond immediately following application.



Grooves technology gives maximum adhesion with minimum energy use.

Range Features & Benefits

- Unique groove technology allows fast application and gives a quick, secure bond
- Polyester reinforcement
- Good Lap security gives maximum resistance to wind uplift
- Superior bond strength with film selvedge
- Easy to cut with a sharp knife
- Large range of colours
- Ideal capsheet for use with Total Torch and TorchSafe systems



FireSmart® Capsheets

All the benefits of standard capsheets but incorporating Icopal's unique FireSmart® technology producing capsheets that provide a fire protection layer, shielding the roof from both spread of flame and fire penetration. Ask for details.



FireSmart® capsheets provide a fire protection layer, shielding the roof from both spread of flame and fire penetration.

SBS Advanced Bitumen Range

Continued.



**Torch
Applied
SBS**

Tecnatorch SBS Capsheet Range

Product Availability		
Product	Roll Width/Length/Weight	Product Code
Tecnatorch Capsheet – Sand	1m x 7.5m / 35.5kg	2002703
Tecnatorch Capsheet – Green Mineral	1m x 7.5m / 36.5kg	2002705
Tecnatorch Capsheet – Blue/Grey Mineral	1m x 7.5m / 36.5kg	2002704
Tecnatorch Capsheet – Brown Mineral	1m x 7.5m / 36.5kg	2002707
Tecnatorch Capsheet – Charcoal Mineral	1m x 7.5m / 36.5kg	2003538
Tecnatorch Capsheet – White (Order only)	1m x 7.5m / 36.5kg	2002706

FireSmart® Tecnatorch Capsheet Range

Product Availability		
Product	Roll Width/Length/Weight	Product Code
FireSmart® Tecnatorch – Green Mineral	1m x 7.5m / 36.5kg	2003031
FireSmart® Tecnatorch – Blue/Grey Mineral	1m x 7.5m / 36.5kg	2003030
FireSmart® Tecnatorch – Brown Mineral	1m x 7.5m / 36.5kg	2003032

Olympic Thermaweld Capsheet Range

Product Availability		
Product	Roll Width/Length/Weight	Product Code
Olympic Thermaweld – Blue/Grey	1m x 8m / 38kg	2000344
Olympic Thermaweld – Green	1m x 8m / 38kg	2000347
Olympic Thermaweld – Brown	1m x 8m / 38kg	2000354

FireSmart® Capsheets

All the benefits of standard capsheets but incorporating Icopal's unique FireSmart® technology producing capsheets that provide a fire protection layer, shielding the roof from both spread of flame and fire penetration. Ask for details.

FireSmart® Olympic Thermaweld Capsheet Range

Product Availability		
Product	Roll Width/Length/Weight	Product Code
FireSmart® Olympic Thermaweld – Blue/Grey	1m x 8m / 38kg	2003080
FireSmart® Olympic Thermaweld – Green	1m x 8m / 38kg	2003081
FireSmart® Olympic Thermaweld – Brown	1m x 8m / 38kg	2003082

FireSmart® Infinity Capsheet Range

Product Availability		
Product	Roll Width/Length/Weight	Product Code
FireSmart® Infinity – Blue/Grey	1m x 7m / 36.5kg	2003049
FireSmart® Infinity – Green	1m x 7m / 36.5kg	2003050
FireSmart® Infinity – Brown	1m x 7m / 36.5kg	2003051

Underlays

Product Availability		
Product	Roll Width/Length Weight	Product Code
Total Torch Vapour Dispersion Layer	1m x 8m / 30kg	2002780
TorchSafe Underlay	1m x 10m / 40kg	3004905
TorchSafe Detailing Underlay	1m x 10m / 40kg	3005215

Vapour Control Layers

Product Availability		
Product	Roll Width/Length Weight	Product Code
TorchSafe Vapour Control Layer	1m x 7.5m / 30kg	3004906
Total Torch Vapour Control Layer	1m x 8m / 30kg	2002781
Icopal Torch-on Vapour Check	1m x 16m / 40kg	2002717

Advanced Bitumen Range

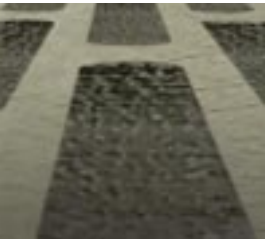
Polyester reinforcements highly modified with SBS / heat activated resin bitumen incorporating engineered stripe and lozenge technology



Total Torch System

Total Torch System

Total Torch systems feature polyester reinforced SBS modified membranes and vapour control layers with vapour pressure control.



Application

- Torch-on

Typical Uses

- Suitable for all built-up roofing applications

Product Guarantee

with the following capsheets:

- Tecnatorch – 12 years
- Olympic Thermaweld – 15 years
- FireSmart® Infinity – 20 years

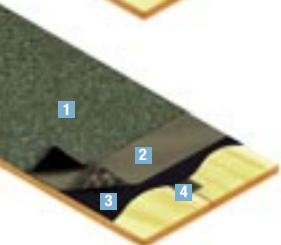
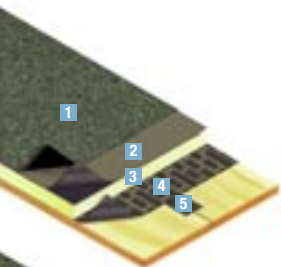
Typical Applications

Warm Roof, Primed Plywood Deck

- 1 Capsheet (see choice)
- 2 Total Torch Vapour Dispersion Layer
- 3 Thermazone Torch-on Insulation
- 4 Total Torch Vapour Control Layer
- 5 Anderson HT Taping Strip to board joints

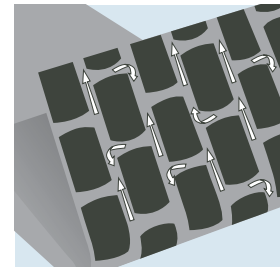
Cold Roof, Plywood Deck

- 1 Capsheet (see choice)
- 2 Total Torch Vapour Dispersion Layer
- 3 Xtra-Seal SF Bitumen Primer
- 4 Anderson HT Taping Strip to board joints



Features & Benefits

- No requirement for a venting base layer – Total Torch Vapour Dispersion Underlay replaces conventional torch on underlays applied directly to the insulation
- Low melt resin bitumen allows fast application and gives a quick, secure bond
- Polyester reinforcement
- Two layers in one
- Superior bond strength
- Good lap security
- Excellent flexibility
- Insulation bonds directly to membrane



Channels allow vapour pressure release.

Total Torch Range

Product Availability		
Product	Roll Width/Length Width	Product Code
Total Torch Vapour Dispersion Layer	1m x 8m / 30kg	2002780
Total Torch Vapour Control Layer	1m x 8m / 30kg	2002781

Choice of Capsheets

The following SBS capsheets can be used with this system:

- Anderson SBS, Performa SBS, Tecnatorch SBS, Olympic Thermaweld
- FireSmart® Tecnatorch, FireSmart® Olympic Thermaweld and FireSmart® Infinity

Advanced Bitumen Range

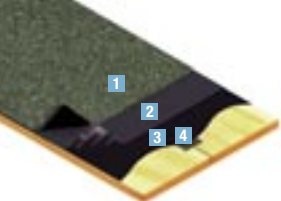
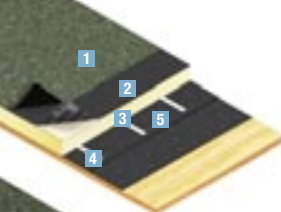
Continued.



TorchSafe System

TorchSafe

TorchSafe system gives you the technology you need to complete a quality roof system quickly, making big energy savings while keeping the entire roof structure safe from fire.



Application

- Partial Torch-on/Heat Activated

Typical Uses

- Suitable for all built-up roofing applications

Product Guarantee

with the following capsheets:

- Tecnatorch – 12 years
- Olympic Thermaweld – 15 years
- FireSmart® Infinity – 20 years

Typical Applications

Warm Roof, Plywood Deck

- 1 Capsheet (see choice)
- 2 TorchSafe Underlay
- 3 Thermazone Roofboard
- 4 Instastik PU Adhesive
- 5 TorchSafe Vapour Control Layer
- 6 Xtra-Seal SF Bitumen Primer
- 7 Anderson HT Taping Strip to board joints

Warm Roof, Timber Boarded Deck

- 1 Capsheet (see choice)
- 2 TorchSafe Underlay
- 3 Thermazone Roofboard
- 4 Instastik PU Adhesive
- 5 Anderson HT 180 Nailed + Torch-on Vapour Check

Cold Roof, Plywood Deck

- 1 Capsheet (see choice)
- 2 TorchSafe Underlay
- 3 Xtra-Seal SF Bitumen Primer
- 4 Anderson HT Taping Strip to board joints

TorchSafe Technology

Within the TorchSafe system, resins are profiled in a distinctive stripe pattern on the underside of the underlay membrane. When the underlay membrane is bonded to the insulation, resin-free channels are formed conducting water vapour to the outside under its own pressure. This eliminates the danger of vapour-induced blistering that can cause premature failure of the waterproofing in conventional systems.



The distinctive stripe pattern eliminates blistering by allowing vapour to disperse under its own pressure.

Features & Benefits

- TorchSafe System requires 50% less torching
- Self-adhesive side laps protect the exposed insulation from flames
- VCL, Underlay and special Detailing Underlay available



TorchSafe Range

Product Availability		
Product	Roll Width/Length Weight	Product Code
TorchSafe Vapour Control Layer	1m x 7.5m / 30kg	3004906
TorchSafe Underlay	1m x 10m / 40kg	3004905
TorchSafe Detailing Underlay	1m x 10m / 40kg	3005215

Choice of Capsheets

The following SBS capsheets can be used with this system:

- Anderson SBS, Performa SBS, Tecnatorch SBS, Olympic Thermaweld
- FireSmart® Tecnatorch, FireSmart® Olympic Thermaweld and FireSmart® Infinity

Anderson Self-adhesive System

SafeSeal® – an economical, clean, safe and simple approach to flat roof waterproofing.



Self Adhesive Application

SafeSeal System



Application

- Self adhesive

Typical uses

- Garages
- Extensions
- Domestic Roofing

Life Expectancy

- 20 years

Self-adhesive Technology

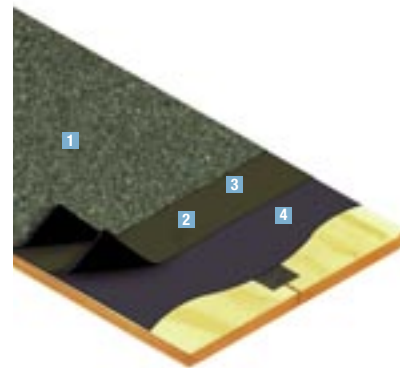
SafeSeal® is a high performance waterproofing system designed to provide a professional finish on new or refurbished flat roofs and because it's self-adhesive there's no need for any bitumen boilers or roofing torches making it totally safe and cleaner to use.

Fixing

SafeSeal® is quick and easy to lay in two self-adhesive layers for maximum waterproofing security. The system comprises a self-adhesive underlay and a self-adhesive capsheet with self-adhesive side laps and a decorative, UV resistant slate granule surface.

The SafeSeal® System Comprises

- **Self-adhesive Underlay** – with self-adhesive side laps.
- **Self-adhesive Capsheet** – with self-adhesive side laps and a decorative, UV resistant slate granule surface.
- **Xtra-Seal SF Bitumen Primer** – for surface preparation prior to laying the membranes.
- **SafeSeal® Sealant** – provides a waterproof seal at roll ends and details.
- **SafeSeal® Pre-formed Aluminium Trims** – to simplify detailing are also available.



- 1 SafeSeal® Capsheet
- 2 SafeSeal® Underlay
- 3 Xtra-Seal SF Bitumen Primer
- 4 Anderson HT Taping Strip to board joints



For further details see our SafeSeal® Product and Installation Guide.

SafeSeal Product Range



SafeSeal® Underlay

- Quick and easy to lay with self-adhesive side laps for maximum waterproofing.
- Cleaner to use
- Polyester reinforcement
- UV resistant
- Tough and durable with a minimum life expectancy of 20 years

Product Availability

Product	Roll Width/Length Weight	Product Code
SafeSeal® Underlay	1m x 8m / 18.5kg	3005074



SafeSeal® Capsheet

- Quick and easy to lay with self-adhesive side laps for maximum waterproofing.
- Cleaner to use
- Polyester reinforcement
- UV resistant
- Tough and durable with a minimum life expectancy of 20 years

Product Availability

Product	Roll Width/Length Weight	Product Code
SafeSeal® Capsheet	1m x 6m / 20kg	3005073

Xtra-Seal SF Bitumen Primer

Solvent free bitumen primer for use with the SafeSeal® self-adhesive system.
Available in 4kg tin.
(coverage 0.1 – 0.3 litres per m²)



Product Availability

Product	Size	Product Code
Xtra-Seal SF Bitumen Primer	4L Tub	3005736
Xtra-Seal SF Bitumen Primer	18L Tub	3005737

SafeSeal® Sealant

Bitumen sealant to secure end laps and insulating filllets.

Available in 300ml cartridge.
(coverage 3 linear metres per cartridge)



Product Availability

Product	Size	Product Code
SafeSeal® Sealant	300ml Cartridge	3005190

SafeSeal® Trims

A range of pre-formed aluminium trims designed to simplify detailing.



Product Availability

Product	Length	Product Code
SafeSeal® DripTrim	Available in 1m lengths	3005227
SafeSeal® Wall Flashing	Available in 1m lengths	3005228

Ancillary Products

A range of ancillary products specially developed for use with Icopal roofing membranes.



For details of the full range of ancillary products see our Xtra-Seal Solutions and Compounds Product Guide.



Xtra-Seal Bitumen Primer

Highly penetrative solvent based primer.

Use – priming plywood, OSB concrete, cementitious screeds, and masonry and weathered bitumen and mastic asphalt.

Apply with a brush or roller.

Product Data	
Colour	Dries to a black finish
Approx Coverage	4 – 6m ² /litre (20 – 30m ² per 5 litres, 100 – 150m ² per 25 litres) depending on porosity of substrate
Drying Time	3 – 6 hours depending on ambient conditions

Product Availability	
Container Size	Product Code
2.5 litre tin	3003482
5 litre tin	3003423
25 litre screw cap plastic drum	3003422

Xtra-Seal QD Bitumen Primer

Quick drying high penetrating bitumen primer.

Use – priming plywood, OSB, concrete, cementitious screeds, masonry and weathered bitumen and mastic asphalt.

Apply with a brush or roller.

Product Data	
Colour	Dries to a black finish
Approx Coverage	4 – 6m ² /litre (20 – 30m ² per 5 litres, 100 – 150m ² per 25 litres) depending on porosity of substrate
Drying Time	Approximately 3 – 4 hours depending on ambient conditions

Product Availability	
Container Size	Product Code
5 litre tin	3000861
25 litre screw cap plastic drum	3000862

Xtra-Seal SF Bitumen Primer

Solvent free high quality elastomer-bitumen primer.

Use – priming plywood, OSB concrete, cementitious screeds, and masonry. Apply with a brush or roller (use above 5°C). Avoid frost and rain before product is dry.

Product Data	
Colour	Dries to a black finish
Approx Coverage	10 – 30m ² /litre (40 – 120m ² per 4 litres, 180 – 540m ² per 18 litres) depending on porosity of substrate.
Drying Time	2 – 3 hours depending on ambient conditions

Product Availability	
Container Size	Product Code
4 litre plastic tub	3005736
18 litre plastic tub	3005737

HT Taping Strip

Product Availability		
Product	Roll Width/Length Weight	Product Code
HT Taping Strip	100mm x 16m	2000237

Instastik Insulation Adhesive

High strength moisture curing PU based adhesive applied in stripes 250mm apart ensuring three stripes per insulation board.

Product Availability		
Container Size		Product Code
10kg	Approx bonding area 60sq.m	3002738
Wand & Accessory Kit		3003688

Flat Roof Accessories

A range of accessories specially designed to ensure waterproofing integrity of the roof remains intact.



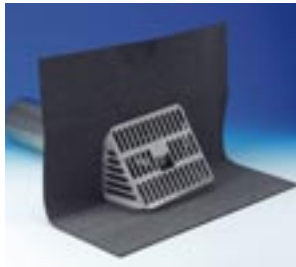
Flat Roof Accessories

Roofgard Range

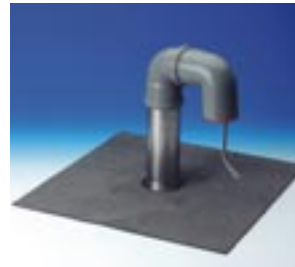
Roofing accessories for roof drainage, vents and ducts for pipes and cables, and a range of GRP roof edge trims that provide a neat and pleasing finish to roof edges.



Roof Outlets & Leaf Grates



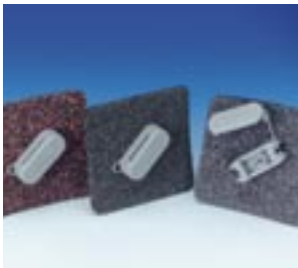
Parapet Outlet



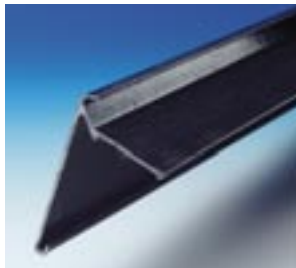
Cable & Pipe Duct



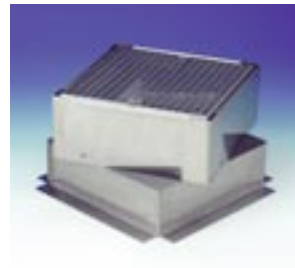
Cowled Telescopic Vent



AnchorFast Lightning Conductor Pads



GRP Edge Trim



Terrace Grates



Plant & Equipment Support System



Paving Support System



TerraDeck Timber Tile

For further information
contact Icopal on
0161 865 4444 or visit
www.icopal.co.uk

Flat Roof Accessories

Continued.



Flat Roof Accessories

FormFlash

Lead free flexible waterproof flashing designed to replace traditional lead flashing.



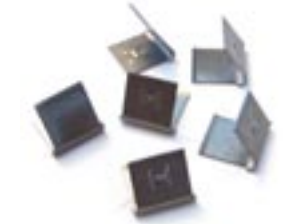
FormFlash



FormFlash



FormFlash Sealant – flexible sealant for pointing FormFlash into brickwork



FormFlash Fixing Clips – replace traditional lead wedges saving time and money

Dalite Rooflights

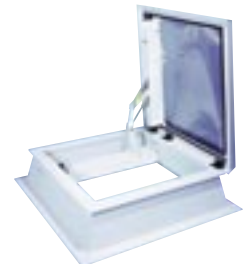
Rooflights and access hatches available in a large range of sizes and styles.



Dalite Vista – Dome



Dalite Stratus – Pyramid



Dalite Stratus – Access Hatch

Xtra-Seal Solutions & Compounds

A range of primers, adhesives, sealants, mastics and coatings and compounds.



Safety Systems



KwikGuard Edge Protection Systems



KwikGuard Fall Restraint Systems