

Monarfloor® Wall Cap 250 System

Acoustic isolation and energy insulating system for timber separating party cavity walls within multi-rise developments.

Monarfloor® Wall Cap 250 isolates the timber twin stud from the separating floor joists, reducing the acoustic flanking sound transmission within the structure. Monarfloor® Wall Cap 250 also ensures the integrity of acoustic floating floor treatments for party floors.

Features and Benefits

- Acoustically isolates the timber separating the floor from the load bearing timber twin stud party wall.
- Reduces the flanking sound transmission energy within the structure.
- Improves air tightness at wall/floor junction (Approved Document L).
- Seals the cavity preventing convected heat loss (Approved Document L/2009 SAP Draft).
- Superior acoustic isolation and damping performance.
- Can be used as an isolator/innovative flanking detail with any acoustic flooring treatment.
- Easily installed on or off site within timber wall or floor constructions.
- Significantly improves the acoustic isolation of the building when used in conjunction with other Monarfloor® acoustic systems for party walls and floors.
- Ensures the robustness of other acoustic systems for party walls and party floors.
- Demonstrates a significant cost saving and flexibility in the design and build of the building.
- Surpasses performance requirements of Approved Document E of the Building Regulations.
- Can be used to improve the acoustic performance and gain credits towards The Code for Sustainable Homes.
- 3-4 cost-neutral credits for the Code for Sustainable Homes when used with other Monarfloor acoustic systems based on PCT test evidence (independent ceiling required for 4 credits floor).

Construction

Monarfloor® Wall Cap 250 consists of a bitumen composite membrane with acoustically rated fillers and a fire retardant finish.

Product Data

Roll Size	250mm wide x 8m long
Thickness	3.5mm (nominal)
Weight	9.5kg

Installation

See over for details.



Monarfloor® Wall Cap 250 Timber System

Installation at a glance

- Roll out the Wall Cap membrane as a continual layer to both the head and sole plate. (This may be done in the manufacturing premises or on-site).
- Centre the membrane and form a return.
- Once centred and located staple the membrane to the timber frame with an industrial staple gun.
- Trim any excess membrane using a sharp utility knife ensuring the integrity of the membrane is not damaged.
- The panels can then be constructed on-site in the normal manner.

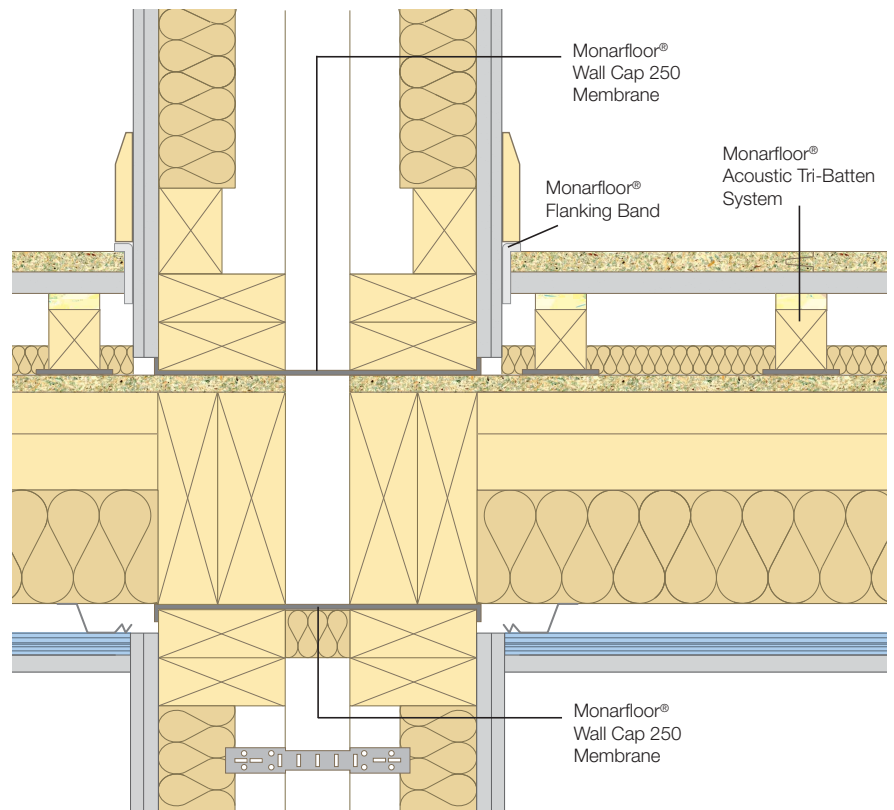
For optimum acoustic isolation, Wall Cap 250 should be installed at every party wall and floor junction.

Related Products

- **Monarfloor® Wall Cap 100 Timber System** – acoustic isolation system for separating timber flanking walls within multi-rise developments. *For full details refer to our Monarfloor® Wall Cap 100 Timber System Data Sheet.*
- **Monarfloor® Wall Cap Lamatherm Timber** – reduces airborne sound transmission and convected heat loss at the party/flanking wall vertical junction. *For full details refer to our Monarfloor® Wall Cap Lamatherm Timber Data Sheet.*
- **Monarfloor® Flanking Band** – reduces impact vibration transmission via party and flanking walls and assists in reducing airborne sound paths. *For full details refer to our Monarfloor® Flanking Band Data Sheet.*
- **Monarfloor® Acoustic Tri-Batten System** – reduces sound transmission through timber frame floors in a timber framed structure. *For full details refer to our Monarfloor® Tri-Batten Data Sheet.*
- **Monarfloor® Isolation Strip** – acoustic strip designed to reduce sound transmission through timber floors. *For full details refer to our Monarfloor® Isolation Strip Data Sheet.*

icopal Limited

Barton Dock Road, Stretford, Manchester M32 0YL
Telephone: 0161 866 6540
Fax: 0161 866 6527
Email: acoustics.uk@icopal.com



Typical timber twin stud separating party wall with timber 'I' joist party floor.

Technical Support

Monarfloor® Acoustic Systems offers FREE technical advice and assistance on all aspects of acoustic systems.

We can also undertake site visits to provide contractors with advice and assistance at every stage of a project from concept to completion.

NOTE: This information is given in good faith being based on the latest knowledge known to Monarfloor® Acoustic Systems. Whilst every effort has been made to ensure the contents of the publication are current while going to press, customers are advised that products, techniques and Codes of Practice are under constant review and liable to change without notice. Up to date information is available from our Technical Services Department on request.

Responsibility cannot be accepted for the application of products, and no claims can be considered, where the manufacturer's instructions have not been followed. The user should not assume, based on information provided in this sheet, that the product is suitable for any abnormal use.

All products are sold subject to our standard terms and conditions of sale, a copy of which is available on request.